



Thermionics specializes in the design and manufacture of low temperature standard and custom fluid chillers for challenging applications. The A-40-1100 FluidChill™ system delivers high reliability and precision temperature control.

## Chiller Specifications

### Cooling and Heating Capacity

Cooling Capacity	°C	+25	0	-20	-40	-45
	kW	6.6	6.6	4.0	1.1	0.5
Condenser	Air-cooled					
Process Heater	1.7kW					
Process Fluid Set Point Range	-40 to +50°C					
Fluid Stability	±0.5°C (at rated load)					

### Pump and Process Fluid

Pump	Gear or Turbine
Process Fluid	Syltherm XLT
Wetted Materials	Copper or Stainless Steel
Flow Rate	4 GPM (15.1 LPM) at 50 PSIG
Available Pressure	50 PSIG (or less)
Fluid Connections	0.5" NPT

### Controls and Compliance

User Interface	5.7" color touch-screen with temperature graphing and charting
Temperature Measurement	Range: -210 to +680°C Resolution: 0.1°C full scale
Remote Communications	Ethernet, Serial, USB
Alarms	Low Flow, Low Reservoir, Out-of-temp Range, Drip Tray
Diagnostics	Runtime hours (controller, chiller, compressor, pump), system performance log, valve activation counts, enclosure temperature
Compliance	CE / RoHS / designed to meet UL1995/UL61010

### Operating Requirements

Ambient Temperature Range	10 to 32°C (25°C nominal)
Power Requirement	3-phase, 208 to 230v, 60Hz
System Dimensions (approximate)	22.0" X 42.0" X 72.5" (55.9 X 106.7 X 184.2 cm)

Cooling capacity with 50Hz power reduced by approximately 17%.  
Consult factory for applications using other heat transfer fluids and flow rates.  
Specifications subject to change.



Programmable touch-screen controls with diagnostics and remote communications

## Chiller Features

- ▶ Touch-screen controller provides precise temperature control with data logging, graphing, performance monitor, and fault alarms
- ▶ Stainless steel, magnetically coupled pump options
- ▶ Compatible with multiple heat transfer fluids
- ▶ Communications options for remote control and reading chiller parameters

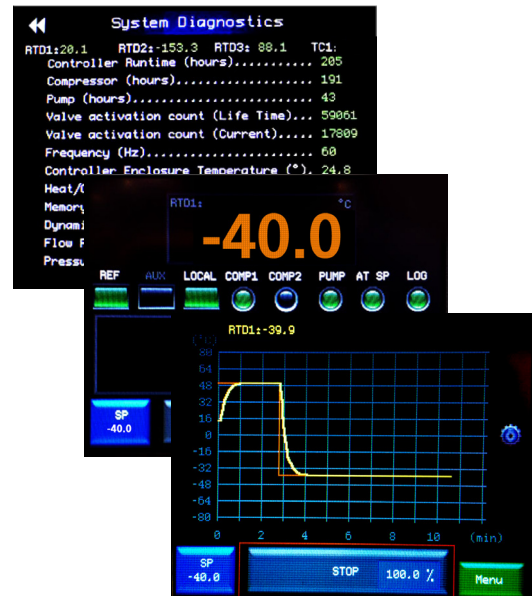
## Chiller Controller

The chiller controller provides precision temperature control with touch-screen operation, easy-to-read information, remote operation, and data logging.

Developed by our in-house engineering team, this controller provides flexible setup and customization not readily achievable with PLCs.

### Controller Specifications

Temperature Measurement	Range: -210 to +680°C Resolution: 0.1°C full scale
User Interface	5.7" color touch-screen with temperature graphing and charting
Control Safety	High and low temperature limits, Independent fail-safe modules (IFM, optional)
Diagnostics	Runtime hours (controller, chiller, compressor, pump), system performance log, valve activation counts, enclosure temperature
Operating Environment	Temperature: 10 to 50°C Humidity: 0 to 50%
Temperature Sensors	Remote RTD (500 Ohm), thermocouple (type K)
Control Algorithms	Primary loop PID, Dual loop multiple RTD control mode
Communication Interfaces	Ethernet 10/100, Telnet, HTML web server, USB 2.0, RS232 (optional)
Alarms	Low flow, low pressure, low fluid reservoir, over temperature
Compliance	CE / RoHS / UL61010



### Controller Features

- ▶ Displays critical parameters such as fluid supply and return temperature and pressure (based on chiller options selected)
- ▶ Alarms for out-of-temperature range, low process flow, low reservoir level, and more
- ▶ Built-in diagnostics – valve counts, ambient temp, equipment runtimes
- ▶ Displays temperature graphs
- ▶ Communicates via Ethernet, USB, HTML Web server, RS-232 (optional)
- ▶ Logs system data and performance
- ▶ CE and RoHS compliant

The inTEST Thermal family includes three temperature-related corporations: Temptronic, Sigma Systems, and Thermonics.

inTEST Thermal Solutions 伯东企业（上海）有限公司中国总代理

若您需要进一步的了解详细信息或讨论，请参考以下联络方式：

上海伯东：叶女士

T: +86-21-5046-3511 ext 109

F: +86-21-5046-1490

M: +86 1391-883-7267

ec@hakuto-vacuum.cn

www.hakuto-vacuum.cn

台湾伯东：王女士

T: +886-03-567-9508 ext 161

F: +886-03-567-0049

M: +886-939-653-958

ec@hakuto.com.tw

www.hakuto-vacuum.com.tw

ISO 9001 Registered  
SL11250RA