



# Duo 1.6/M

Dual-stage rotary vane pumps with a pumping speed of 1.5 m<sup>3</sup>/h:



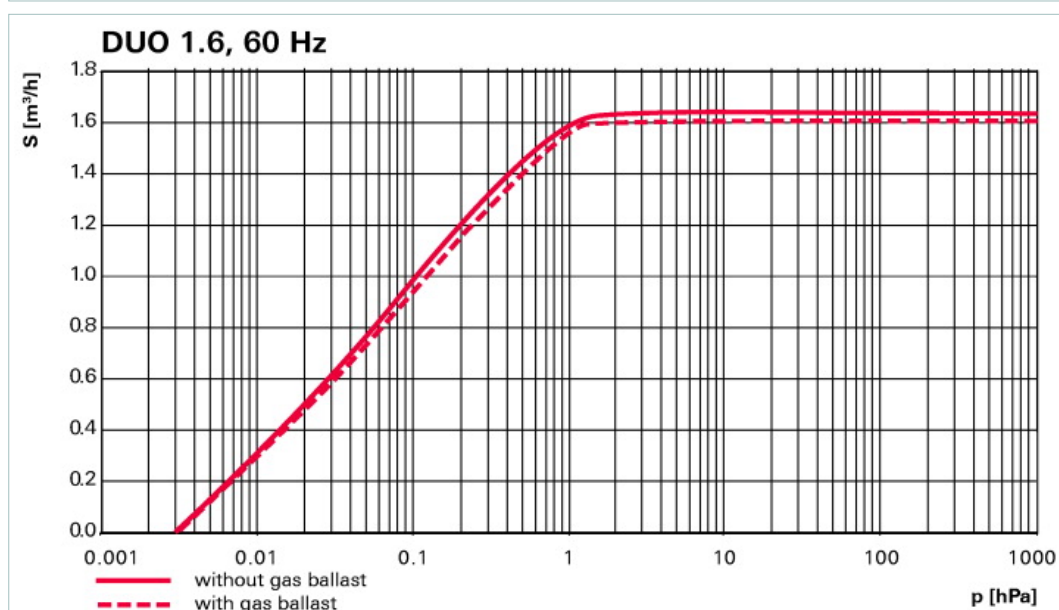
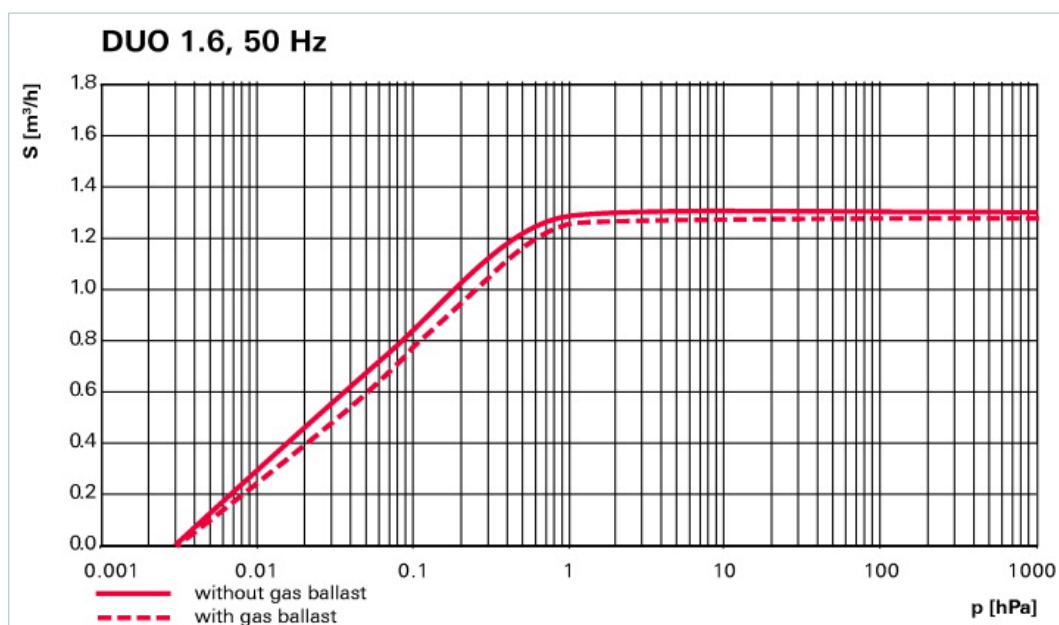


Similar Image

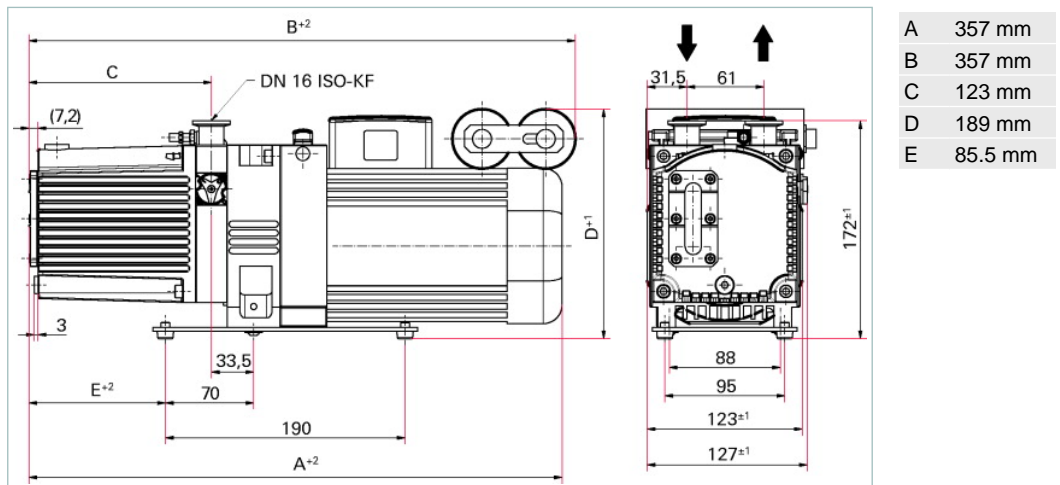
## Duo 1.6 M, 1-phase motor, 230-240 V, 50/60 Hz

- Dual-stage, high-performance rotary vane pump with a pumping speed of 1.25 m<sup>3</sup>/h at 50 Hz / 1.50 m<sup>3</sup>/h at 60 Hz
- With magnetic coupling
- With single-phase motor with C14 connector plug inside the terminal box
- Integrated gas ballast and safety valve
- Oil return device is included with the pump
- For all low and medium vacuum applications
- Special feature: various motor voltages for wide range of application fields

M = Magnetically coupled



## Dimensions



Technical Data	Duo 1.6 M, 1-phase motor, 230-240 V, 50/60 Hz
Ambient temperature	12-40 °C   53.6-104 °F   285-313 K
Cooling method, standard	Air
Emission sound pressure level without gas ballast at 50 Hz	≤ 48 dB (A)
Exhaust pressure, max.	1,500 hPa   1,125 Torr   1,500 mbar
Exhaust pressure, min.	250 hPa   187.5 Torr   250 mbar
Flange (in)	DN 16 ISO-KF
Flange (out)	DN 16 ISO-KF
Leak rate safety valve	≤ 1 · 10 <sup>-5</sup> Pa m <sup>3</sup> /s   ≤ 7.5 · 10 <sup>-5</sup> Torr l/s   ≤ 1 · 10 <sup>-4</sup> mbar l/s
Magnetic coupling	yes
Mains requirement: voltage 50 Hz	230-240 V
Mains requirement: voltage 60 Hz	230-240 V
Motor version	1-phase Motor
Operating fluid	P3
Operating fluid filling	0.4 l
Protection category	IP 40
Pumping speed at 50 Hz	1.25 m <sup>3</sup> /h
Pumping speed at 60 Hz	1.50 m <sup>3</sup> /h
Rated power 50 Hz	0.075 kW
Rated power 60 Hz	0.090 kW
Rotation speed at 50 Hz	1500 min <sup>-1</sup>
Rotation speed at 60 Hz	1800 min <sup>-1</sup>
Switch	yes
Ultimate pressure with gas ballast	3 · 10 <sup>-3</sup> hPa   2.25 · 10 <sup>-3</sup> Torr   3 · 10 <sup>-3</sup> mbar
Ultimate pressure without gas ballast	3 · 10 <sup>-3</sup> hPa   2.25 · 10 <sup>-3</sup> Torr   3 · 10 <sup>-3</sup> mbar
Weight	10.5 kg   23.15 lb

Typical ultimate pressure according to PNEUROP

## Order number

Duo 1.6/M

PK D56 112

<b>Accessories</b>	
<b>Accessories</b>	
Oil return unit from ONF 16 M to Duo 1.6, 3, 6, 11	<b>PK 006 080 -T</b>
Oil return unit from ONF 16 S to Duo 1.6 / Duo 3	<b>PK 005 986 -T</b>
<b>Accessories UnoLine</b>	
KAS 16, condensate separator for pumping speeds from 1.6 to 12 m <sup>3</sup> /h	<b>PK Z10 003</b>
Mains cable 115 / 230 V without plug, right angle IEC 320/C13 socket, 3 m	<b>PK 050 111</b>
Mains cable 115 V with NEMA-plug, right angle IEC 320/C13 socket, 2 m	<b>PK 050 110</b>
Mains cable 230 V with safety plug CEE 7, right angle IEC 320/C13 socket, 2 m	<b>PK 050 109</b>
ONF 16 M, oil mist filter for pumping speeds of up to 12 m <sup>3</sup> /h	<b>PK Z40 003</b>
ONF 16 S, oil mist filter for pumping speeds up to 12 m <sup>3</sup> /h	<b>PK Z40 001</b>
Operations monitoring unit 1 for Duo 1.6/3/6/11 and Duo 5/10/20 M	<b>PK 196 157 -T</b>
Operations monitoring unit 2 for Duo 1.6/3/6/11 and Duo 5/10/20 M	<b>PK 196 142 -T</b>
Operations monitoring unit 3 for Duo 1.6/3/6/11 and Duo 5/10/20 M	<b>PK 196 141 -T</b>
SAS 16, DN 16 ISO-KF, polyester filter	<b>PK Z60 506</b>
ZFO 16, zeolite trap	<b>PK Z70 003</b>
<b>Consumables</b>	
P3, mineral oil, 1 l	<b>PK 001 106 -T</b>
P3, mineral oil, 0.5 l	<b>PK 001 136 -T</b>