



Duo 3/M/DC

Dual-stage rotary vane pumps with a pumping speed up to 2.9 m³/h:



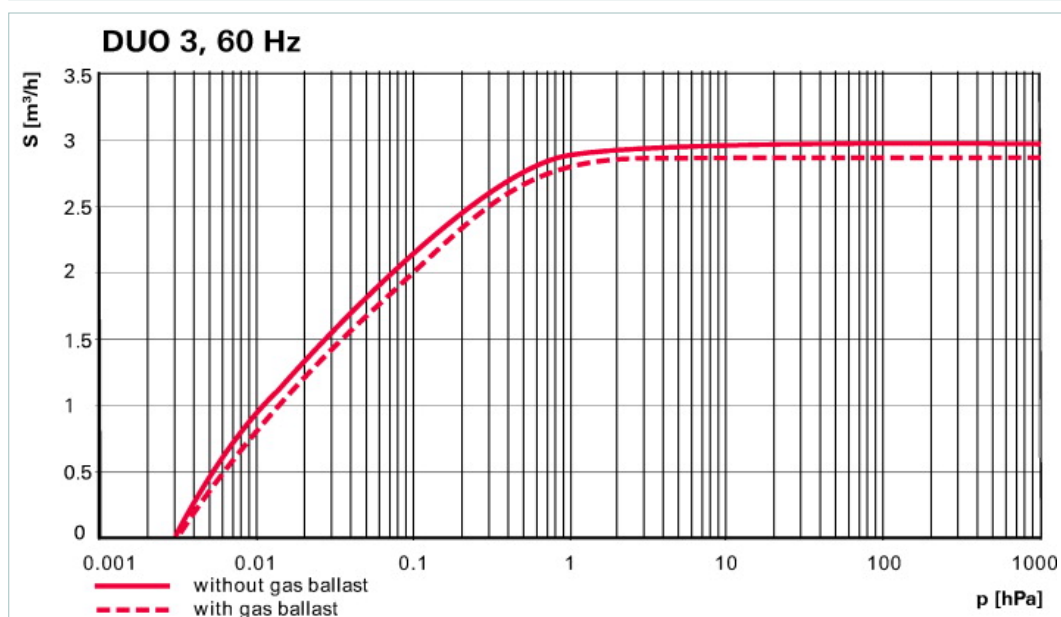
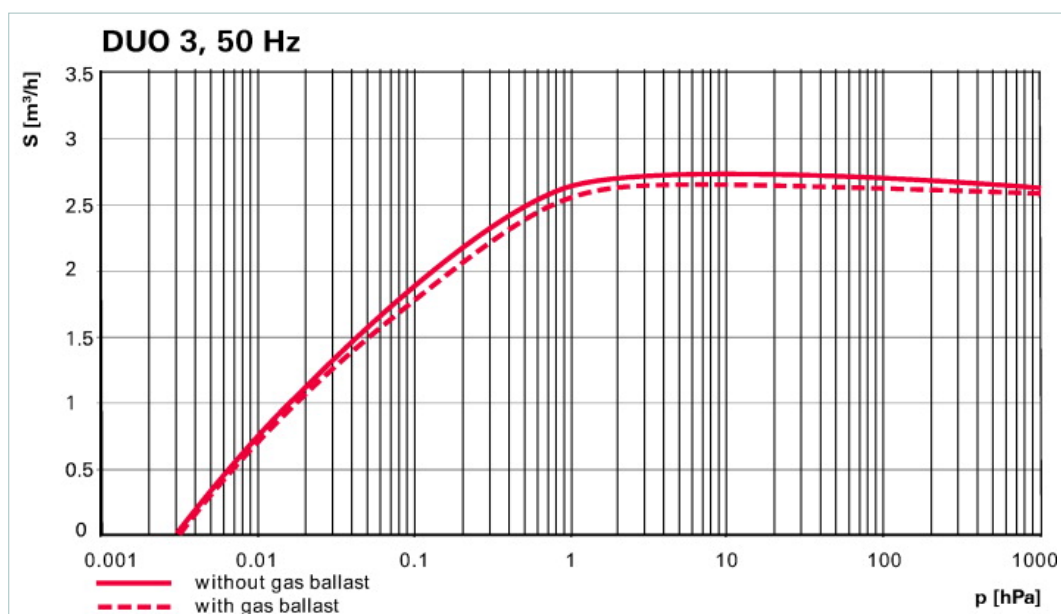


Similar Image

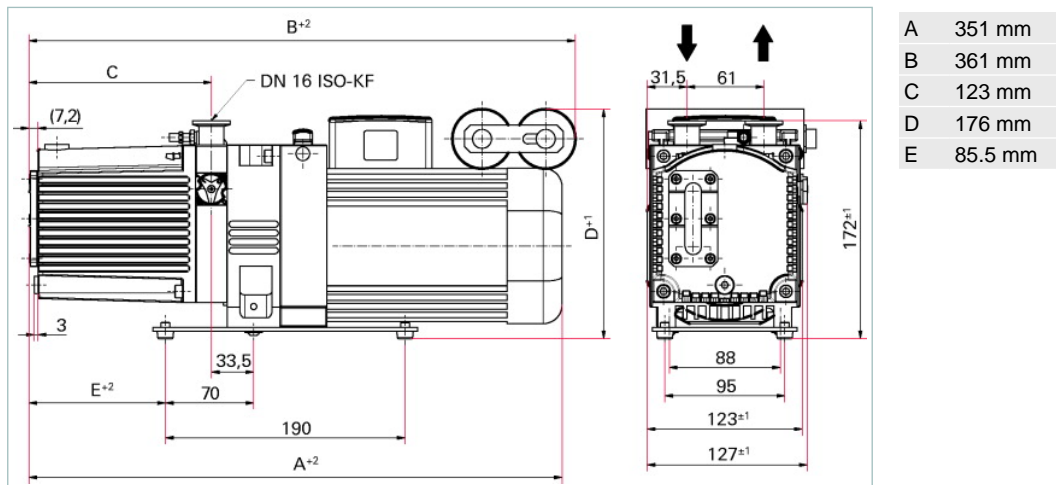
Duo 3 M, 1-phase motor, 115 V, 50/60 Hz; 230 V, 50/60 Hz

- Dual-stage, high-performance rotary vane pump with a pumping speed of 2.5 m³/h at 50 Hz / 2.9 m³/h at 60 Hz
- With magnetic coupling
- With single-phase motor with C14 connector plug inside the terminal box
- Integrated gas ballast and safety valve
- Oil return device is included with the pump
- For all low and medium vacuum applications
- Special feature: various motor voltages for wide range of application fields

M = Magnetically coupled



Dimensions



Technical Data		Duo 3 M, 1-phase motor, 115 V, 50/60 Hz; 230 V, 50/60 Hz	
Ambient temperature		12-40 °C 53.6-104 °F 285-313 K	
Cooling method, standard		Air	
Emission sound pressure level without gas ballast at 50 Hz		≤ 53 dB (A)	
Exhaust pressure, max.		1,500 hPa 1,125 Torr 1,500 mbar	
Exhaust pressure, min.		250 hPa 187.5 Torr 250 mbar	
Flange (in)		DN 16 ISO-KF	
Flange (out)		DN 16 ISO-KF	
Leak rate safety valve		≤ 1 · 10 ⁻⁵ Pa m ³ /s ≤ 7.5 · 10 ⁻⁵ Torr l/s ≤ 1 · 10 ⁻⁴ mbar l/s	
Magnetic coupling		yes	
Mains requirement: voltage (selectable)		230 V	
Mains requirement: voltage 50 Hz		115 V	
Mains requirement: voltage 60 Hz		115 V	
Motor version		1-phase Motor	
Operating fluid		P3	
Operating fluid filling		0.4 l	
Protection category		IP 40	
Pumping speed at 50 Hz		2.5 m ³ /h	
Pumping speed at 60 Hz		2.9 m ³ /h	
Rated power 50 Hz		0.15 kW	
Rated power 60 Hz		0.18 kW	
Rotation speed at 50 Hz		3000 min ⁻¹	
Rotation speed at 60 Hz		3600 min ⁻¹	
Switch		yes	
Ultimate pressure with gas ballast		3 · 10 ⁻³ hPa 2.25 · 10 ⁻³ Torr 3 · 10 ⁻³ mbar	
Ultimate pressure without gas ballast		3 · 10 ⁻³ hPa 2.25 · 10 ⁻³ Torr 3 · 10 ⁻³ mbar	
Weight		12.2 kg 26.9 lb	

Typical ultimate pressure according to PNEUROP

Order number

Duo 3/M/DC

PK D57 111

Accessories	
Accessories	
Oil return unit from ONF 16 M to Duo 1.6, 3, 6, 11	PK 006 080 -T
Oil return unit from ONF 16 S to Duo 1.6 / Duo 3	PK 005 986 -T
Accessories UnoLine	
KAS 16, condensate separator for pumping speeds from 1.6 to 12 m ³ /h	PK Z10 003
Mains cable 115 / 230 V without plug, right angle IEC 320/C13 socket, 3 m	PK 050 111
Mains cable 115 V with NEMA-plug, right angle IEC 320/C13 socket, 2 m	PK 050 110
Mains cable 230 V with safety plug CEE 7, right angle IEC 320/C13 socket, 2 m	PK 050 109
ONF 16 M, oil mist filter for pumping speeds of up to 12 m ³ /h	PK Z40 003
ONF 16 S, oil mist filter for pumping speeds up to 12 m ³ /h	PK Z40 001
Operations monitoring unit 1 for Duo 1.6/3/6/11 and Duo 5/10/20 M	PK 196 157 -T
Operations monitoring unit 2 for Duo 1.6/3/6/11 and Duo 5/10/20 M	PK 196 142 -T
Operations monitoring unit 3 for Duo 1.6/3/6/11 and Duo 5/10/20 M	PK 196 141 -T
SAS 16, DN 16 ISO-KF, polyester filter	PK Z60 506
ZFO 16, zeolite trap	PK Z70 003
Consumables	
P3, mineral oil, 1 l	PK 001 106 -T
P3, mineral oil, 0.5 l	PK 001 136 -T