



# HiPace<sup>®</sup> 300 with TC 400, Profibus, DN 100 ISO-F

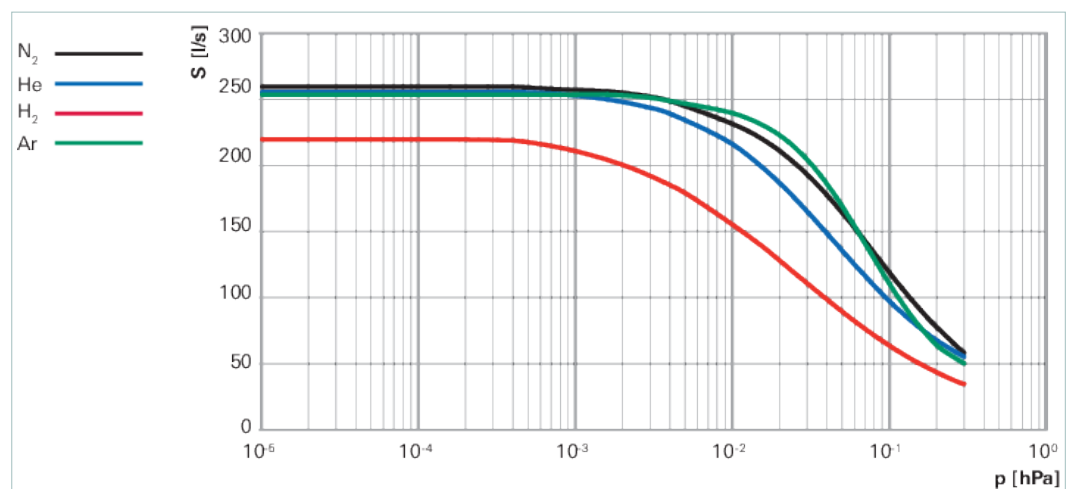




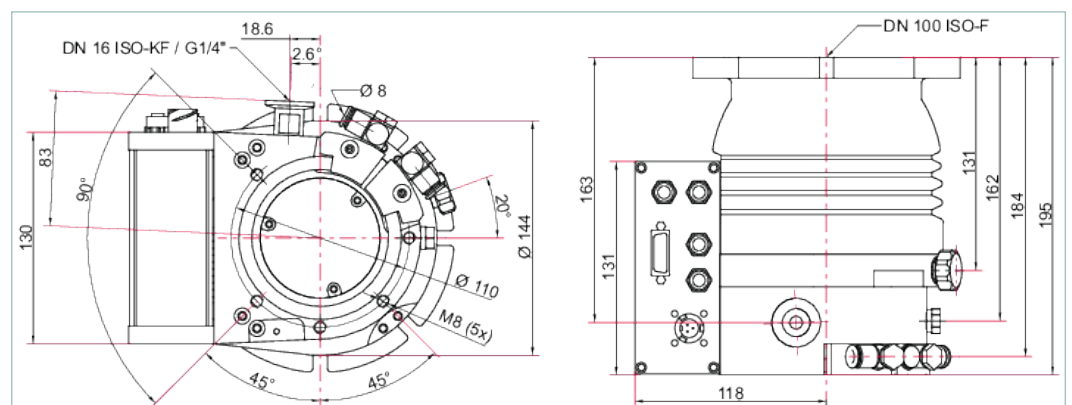
Similar Image

## HiPace® 300 with TC 400, Profibus, DN 100 ISO-F

- Rugged, powerful turbopump with a pumping speed of up to 260 l/s for N<sub>2</sub>
- Integrated drive electronics TC 400 with Profibus
- Ideal for analytical and industrial applications
- For installation in any orientation
- With integrated water cooling for maximum gas throughput
- Flexible through the ability to employ up to 4 accessories
- Profibus connection with M12-plug-in connector
- Ideal for fast cycles
- Extensive accessories expand the range of applications
- Corrosive gas version on request



### Dimensions



Technical Data	HiPace® 300 with TC 400, Profibus, DN 100 ISO-F
Bearing	Hybrid
Compression ratio for Ar	$> 1 \cdot 10^{11}$
Compression ratio for H <sub>2</sub>	$9 \cdot 10^5$
Compression ratio for He	$> 1 \cdot 10^8$
Compression ratio for N <sub>2</sub>	$> 1 \cdot 10^{11}$
Connection flange (in)	DN 100 ISO-F
Connection flange (out)	DN 16 ISO-KF/G 1/4"
Cooling method, optional	Air
Cooling method, standard	Water

Technical Data	HiPace® 300 with TC 400, Profibus, DN 100 ISO-F
Cooling water flow	50 l/h
Cooling water flow, max.	50 l/h
Cooling water flow, min.	50 l/h
Cooling water temperature	15-35 °C   59-95 °F   288-308 K
Current max.	12,5 A
Electronic drive unit	with TC 400
Final pressure without gas ballast	$< 1 \cdot 10^{-7}$ hPa   $< 7.5 \cdot 10^{-8}$ Torr   $< 1 \cdot 10^{-7}$ mbar
Fore-vacuum max. for N <sub>2</sub>	20 hPa   15 Torr   20 mbar
Gas throughput at full rotational speed for Ar	7 hPa·l/s
Gas throughput at full rotational speed for H <sub>2</sub>	> 14 hPa·l/s
Gas throughput at full rotational speed for He	20 hPa·l/s
Gas throughput at full rotational speed for N <sub>2</sub>	14 hPa·l/s
I/O interfaces	RS-485, Remote, Profibus
Interface, extended	Profibus
Mounting orientation	Any
Operating voltage: V DC	24 (± 5 %) V DC
Permissible radial magnetic field max.	5.5 mT
Power consumption max.	300 W
Protection category	IP54
Pumping speed for Ar	255 l/s
Pumping speed for H <sub>2</sub>	220 l/s
Pumping speed for He	255 l/s
Pumping speed for N <sub>2</sub>	260 l/s
Rotation speed ± 2 %	60,000 rpm   60,000 min <sup>-1</sup>
Run-up time	1.8 min
Sound pressure level	≤50 dB(A)
Ultimate pressure according to PNEUROP	$< 1 \cdot 10^{-7}$ hPa   $< 7.5 \cdot 10^{-8}$ Torr   $< 1 \cdot 10^{-7}$ mbar
Venting connection	G 1/8"
Weight	7 kg   15.43 lb

Order number	
HiPace® 300	PM P04 232

Accessories	
<b>Adapters (electrical) Profibus</b>	
Y-Connector M12B to Profibus	P 4723 015
Y-Connector with cable M12B to Profibus, 0.5 m	P 4723 018
T-Connector M12B to Profibus	P 4723 020
Termination resistor M12B for Profibus	P 4723 030
Plug and socket M12B for Profibus	PM 051 927 -T
Remote adapter for RS-485	PM 061 649 -X
Line filter for cable fitting	PM 061 806
<b>Adapters (electrical) Remote</b>	
Y-Connector, shielded, M12 for accessories	P 4723 013
Supply socket TC 400/TM 700, straight	P 4723 100
Supply bushing, angled, for TC 400/TM 700	P 4723 101
<b>Adapters (electrical) RS-232/485</b>	
Y-distributor M12 to RS-485	P 4723 010
USB RS-485 converter	PM 061 207 -T
Coupling M12 for RS-485	PM 061 270 -X
Termination resistor for RS-485	PT 348 105 -T
Power separator for RS-485	PT 348 132 -T
<b>Cables Backing pump control cables</b>	
Control cable for pumping stations 0.7 m	PM 061 675 AT
HiPace – ACP connection cable	PM 071 142 -X
<b>Cables Connection cables</b>	
Connection cable for HiPace with TC 400/TM 700 to power supply pack TPS/DCU 310/311/400/401	PM 061 352 -T
<b>Cables Extension cables</b>	
Extension cable M12 on M12	PM 061 747 -T
<b>Cables Mains cables / Power cords</b>	
Mains cable 230 V AC, CEE 7/7 to C13, 3 m	P 4564 309 ZA
Mains cable 115 V AC, NEMA 5-15 to C13, 3 m	P 4564 309 ZE
Mains cable 208 V AC, NEMA 6-15 to C13, 3 m	P 4564 309 ZF
<b>Cables RS-485 Interface cables</b>	
Interface cable, M12 m straight/M12 m straight, 3 m	PM 061 283 -T
Interface cable, M12 m straight/ M12 m angled, 0.7 m	PM 061 791 -T
<b>Control Devices Backing pump</b>	
Relay box for backing pumps, single phase 20 A for TC 400 and TCP 350, M12 plug	PM 061 375 -T
Relay box, shielded, for backing pumps, 1-phase 7 A for TC 400/1200, TM 700 and TCP 350, M12	PM 071 284 -X
Relay box, shielded, for backing pumps, 1-phase 20 A for TC 400/1200, TM 700 and TCP 350, M12	PM 071 285 -X
<b>Control Devices Power supplies and control displays</b>	
HPU 001, Handheld Programming Unit	PM 051 510 -T
Accessories package for HPU 001/PC	PM 061 005 -T
TPS 310, power supply pack for wall/standard rail fitting	PM 061 342 -T
TPS 311, power supply pack 3HU 19" rack module	PM 061 346 -T
DCU 002, Display Control Unit	PM 061 348 AT
Front panel kit for TPS 311	PM 061 395 -T
DCU 310, Display control unit with power supply pack	PM C01 822

Accessories	
<b>Cooling Air cooling</b>	
Air cooling for HiPace 300 with TC 400	PM Z01 302
Air cooling for HiPace 300, 115 V	PM Z01 308
Air cooling for HiPace 300, 230 V	PM Z01 309
Air cooling, shielded, for HiPace 300 with TC 400 PB	PM Z01 362
<b>Monitoring Pressure Sensors</b>	
RPT 010, digital Piezo/Pirani sensor	PT R71 100
IKT 010, digital cold cathode sensor, low current	PT R72 100
IKT 011, digital cold cathode sensor, high current	PT R73 100
<b>Monitoring Sealing gas monitoring units</b>	
Sealing gas monitoring unit G 1/8"	PM 016 911 -U
<b>Mounting DN ISO-F, Mounting kits</b>	
Mounting kit for DN 100 ISO-F, including coated centering ring, hexagon screws	PM 016 450 -T
Mounting kit for DN 100 ISO-F, including coated centering ring, splinter shield, hexagon screws	PM 016 451 -T
Mounting kit for DN 100 ISO-F, including coated centering ring, protective screen, hexagon screws	PM 016 452 -T
Mounting kit for DN 100 ISO-F, including coated centering ring, stud screws	PM 016 455 -T
Mounting kit for DN 100 ISO-F, including coated centering ring, splinter shield, stud screws	PM 016 456 -T
Mounting kit for DN 100 ISO-F, including coated centering ring, protection screen, stud screws	PM 016 457 -T
<b>Mounting DN ISO-K/-F, sealings</b>	
Centering ring with multifunction coating, DN 100 ISO-K/-F	PM 016 210 -U
<b>Mounting Wall rail fittings</b>	
Wall rail fitting for TPS 110/180/310/400	PM 061 392 -T
<b>Other</b>	
TIC 010, adapter for two sensors	PT R70 000
<b>Protection DN ISO-K/-F, sealings, splinter shields, protection screens</b>	
Centering ring with multifunction coating and integrated splinter shield, DN 100 ISO-K/-F	PM 016 807 -U
Centering ring with multifunction coating and integrated protection screen, DN 100 ISO-K/-F	PM 016 212 AU
<b>Protection Sealing gas throttles</b>	
Sealing gas throttle for HiPace 300	PM Z01 317
<b>Valves Fore-vacuum safety valves</b>	
TVV 001, fore-vacuum safety valve, 230 V AC	PM Z01 205
TVV 001, fore-vacuum safety valve, 115 V AC	PM Z01 206
<b>Valves Sealing gas valves, shielded (normally closed)</b>	
Sealing gas valve, shielded for HiPace 300 with TC 400 and TM 700, TCP 350	PM Z01 312
<b>Venting Power failure venting units (normally open)</b>	
Power failure venting valve, shielded, 24 V DC, G 1/8" for connection to TC 400, TM 700 and TC 1200	PM Z01 331

<b>Accessories</b>	
<b>Venting Venting accessories</b>	
Flange with Pipe Thread, DN 16 ISO-KF, G 1/8"	<b>PM 016 780 -T</b>
Push-in fitting for 6 mm tube, G 1/8"	<b>PM 016 781 -T</b>
Push-in fitting for 8 mm tube, G 1/8"	<b>PM 016 782 -T</b>
Hose nozzle for 9 mm hose, G 1/8"	<b>PM 016 783 -T</b>
Banjo fitting	<b>PM 016 787 -T</b>
Screw-in flange, DN 10 ISO-KF, G 1/8"	<b>PM 033 737 -T</b>
Banjo fitting, small	<b>PM 143 877 -T</b>
TTV 001, Drier for Venting Turbopumps	<b>PM Z00 121</b>
<b>Venting Venting valves (normally closed)</b>	
Venting valve, shielded, 24 V DC, G 1/8", for connection to TC 400/1200 and TM 700	<b>PM Z01 291</b>
Venting valve, shielded, 24 V DC, G1/8" for connecting to TC 400, 1200 as well as TM 700 with an 270° angled plug	<b>PM Z01 292</b>
<b>Vibration Reduction Vibration dampers</b>	
Vibration damper for HiPace 300/400, DN 100 ISO-K/F	<b>PM 006 459 AX</b>



伯东企业（上海）有限公司  
**HAKUTO ENTERPRISES (SHANGHAI) LTD.**  
TEL: (86) 21-5046 3511 TEL: (86) 21-5046 1322

**上海伯东 -- 您理想的真空合作伙伴！**

伯东公司成立于 1953 年，外企上市企业，全球范围内有一千七百名员工，集团年营业额约为 100亿人民币。

伯东公司在国内主要城市：上海，北京，苏州，广州，深圳，成都及厦门设有营业据点。

上海伯东真空产品事业部已累计为超过 10,000 家企业提供真空服务

**我们致力于追求高品质的服务，为您提供一流的服务及一流产品：**

**品质保障：**国际知名品牌指定授权代理商，所有产品及部件保证 100% 原厂原装进口

**现货交期快：**部分产品有现货，下单立即发货（现货数量有限，实际情况请联系销售工程师）

**卓越维修能力：**伯东工程师拥有10年以上维修经验，且受国外专业培训，拥有完全的拆解，维修，校正能力。

**完美服务质量：**原装进口检测设备全方位寻找问题症结及全方面的性能测试，确保完美的服务质量



伯东企业（上海）有限公司 销售及售后服务中心

上海浦东新区新金桥路1888号36号楼7楼702室

电 话：+86-21-5046-3511 / 139-1883-7267

传 真：+86-21-5046-1490

官 网：<http://www.hakuto-vacuum.cn>



伯东企业（上海）有限公司 深圳办事处 销售中心

深圳市罗湖区宝安南路1036号鼎丰大厦501

电 话：+86- 0755-2547-3988. 643

传 真：+86-21-5046-1490

伯东企业（上海）有限公司 北京办事处 销售中心

北京丰台区芳群园四区22号楼金城中心705室

电 话：+86- 010-8768-4988

传 真：+86-21-5046-1490