



HiPace[®] 300 with TC 110, Profibus, DN 100 ISO-F

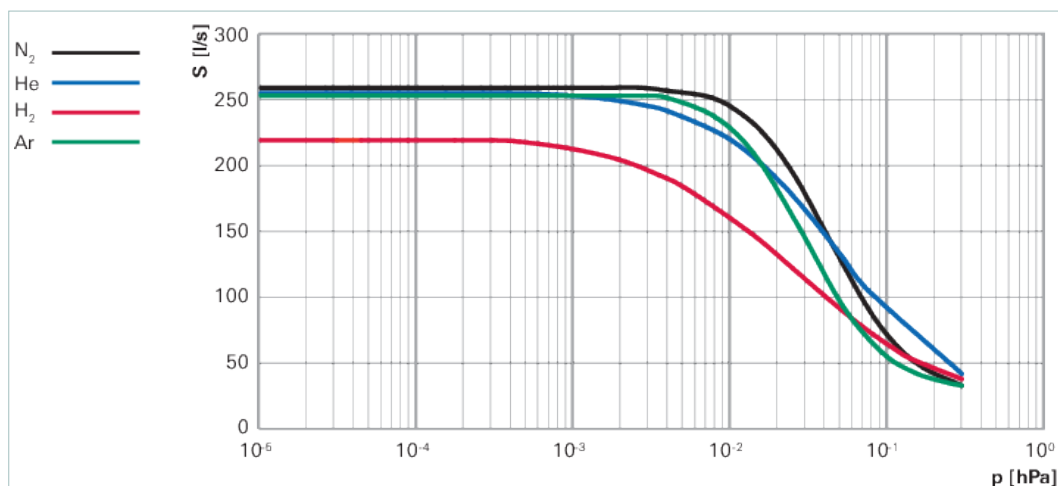




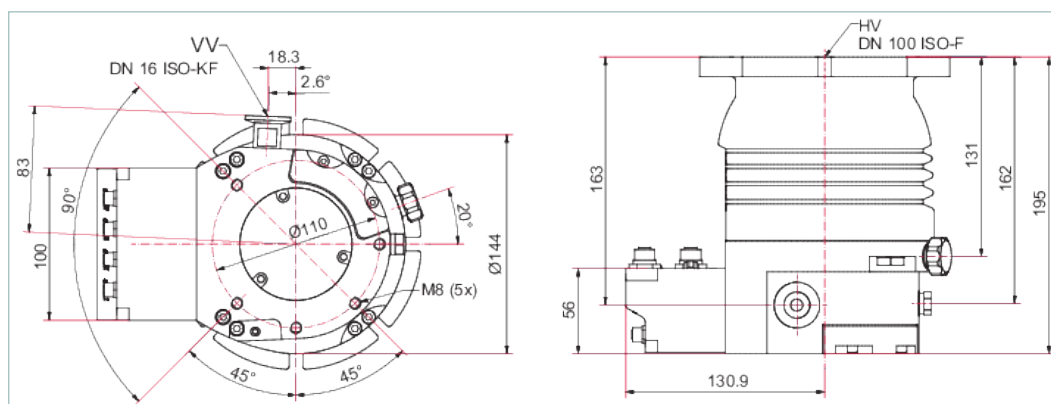
Similar Image

HiPace® 300 with TC 110, Profibus, DN 100 ISO-F

- Rugged, powerful turbopump with a pumping speed of up to 260 l/s für N₂
- Integrated drive electronics TC 110 with Profibus
- Ideal for analytical and industrial applications
- For installation in any orientation
- Extensive accessories expand the range of applications



Dimensions



Technical Data	HiPace® 300 with TC 110, Profibus, DN 100 ISO-F
Bearing	Hybrid
Compression ratio for Ar	$> 1 \cdot 10^{11}$
Compression ratio for H ₂	$9 \cdot 10^5$
Compression ratio for He	$> 1 \cdot 10^8$
Compression ratio for N ₂	$> 1 \cdot 10^{11}$
Connection flange (in)	DN 100 ISO-F
Connection flange (out)	DN 16 ISO-KF/G 1/4"
Cooling method, optional	Water
Cooling method, standard	Air
Cooling water flow	50 l/h
Cooling water flow, max.	50 l/h
Cooling water flow, min.	50 l/h
Cooling water temperature	15-35 °C 59-95 °F 288-308 K
Current max.	7,5 A

Technical Data	HiPace® 300 with TC 110, Profibus, DN 100 ISO-F
Electronic drive unit	with TC 110
Final pressure without gas ballast	$< 1 \cdot 10^{-7}$ hPa $< 7.5 \cdot 10^{-8}$ Torr $< 1 \cdot 10^{-7}$ mbar
Fore-vacuum max. for N ₂	15 hPa 11.25 Torr 15 mbar
Gas throughput at full rotational speed for Ar	2 hPa·l/s
Gas throughput at full rotational speed for H ₂	> 14 hPa·l/s
Gas throughput at full rotational speed for He	8 hPa·l/s
Gas throughput at full rotational speed for N ₂	5 hPa·l/s
I/O interfaces	RS-485, Remote, Profibus
Interface, extended	Profibus
Mounting orientation	Any
Operating voltage: V DC	24 (± 5 %) V DC
Permissible radial magnetic field max.	5.5 mT
Power consumption max.	180 W
Protection category	IP54
Pumping speed for Ar	255 l/s
Pumping speed for H ₂	220 l/s
Pumping speed for He	255 l/s
Pumping speed for N ₂	260 l/s
Rotation speed ± 2 %	60,000 rpm 60,000 min ⁻¹
Run-up time	3.5 min
Sound pressure level	≤50 dB(A)
Ultimate pressure according to PNEUROP	$< 1 \cdot 10^{-7}$ hPa $< 7.5 \cdot 10^{-8}$ Torr $< 1 \cdot 10^{-7}$ mbar
Venting connection	G 1/8"
Weight	6.6 kg 14.55 lb

Order number
HiPace® 300
PM P04 238

Accessories	
Adapters (electrical) Profibus	
Y-Connector M12B to Profibus	P 4723 015
Y-Connector with cable M12B to Profibus, 0.5 m	P 4723 018
T-Connector M12B to Profibus	P 4723 020
Termination resistor M12B for Profibus	P 4723 030
Plug and socket M12B for Profibus	PM 051 927 -T
Line filter for cable fitting	PM 061 806
Adapters (electrical) Remote	
Housing for plug, spraywater-protected, 15-pole, D-Sub	P 0998 016
Mains power plug for TC 110/120 and mating plug for E74 interface, straight	P 4723 110
Mains power plug angled for TC 110/120 and mating plug for interface E74	P 4723 111
TCS 11, adapter for TC 110/120 with RS-485 interface	PM 061 636 -U
TCS 12, adapter for TC 110/120 with interface RS-485, 4 accessory ports and coupling set	PM 061 638 -U
TCS 13, adapter for TC 110/120 with interface RS-485, 2 accessory ports and coupling set	PM 061 856 -U
Adapters (electrical) RS-232/485	
Y-distributor M12 to RS-485	P 4723 010
USB RS-485 converter	PM 061 207 -T
Coupling M12 for RS-485	PM 061 270 -X
Termination resistor for RS-485	PT 348 105 -T
Power separator for RS-485	PT 348 132 -T
Cables Backing pump control cables	
Control cable for valve	PM 061 687 -T
HiPace – ACP connection cable	PM 071 142 -X
Cables Connection cables	
Connection cable with RS-485 interface for MVP to power supply pack	PM 061 350 -T
Connection cable with RS-485 interface and 2 accessory ports for TC110/120 to power supply pack	PM 061 351 -T
Connection cable with RS-485 interface and 3 accessory ports for TC110/120 to power supply pack	PM 061 512 -T
Connection cable for HiPace with TC 110/120	PM 061 543 -T
Connection cable incl. 2 accessory ports for TC 110/120 to power supply pack	PM 061 552 -T
Cables Extension cables	
Extension cable M8 on M8	PM 061 783 -T
Cables Mains cables / Power cords	
Mains cable 230 V AC, CEE 7/7 to C13, 3 m	P 4564 309 ZA
Mains cable 115 V AC, NEMA 5-15 to C13, 3 m	P 4564 309 ZE
Mains cable 208 V AC, NEMA 6-15 to C13, 3 m	P 4564 309 ZF
Cables RS-485 Interface cables	
Interface cable, M12 m straight/M12 m straight, 3 m	PM 061 283 -T
Interface cable, M12 m straight/ M12 m angled, 0.7 m	PM 061 791 -T
Control Devices Backing pump	
Relay box for backing pumps, 1-phase 20 A for TC 110/120 and TCP 350, plug M8	PM 061 373 -T
Relay box, shielded, for backing pumps, 1-phase 7A for TC 110/120 and TCP 350, plug M8	PM 071 282 -X

Accessories	
Control Devices Power supplies and control displays	
HPU 001, Handheld Programming Unit	PM 051 510 -T
Accessories package for HPU 001/PC	PM 061 005 -T
TPS 180, power supply pack for wall/standard rail installation	PM 061 341 -T
TPS 181, power supply pack 19" plug-in unit 3HU	PM 061 345 -T
DCU 002, Display Control Unit	PM 061 348 AT
Front panel kit for TPS 181	PM 061 394 -T
DCU 180, display control unit incl. power supply pack 19"	PM C01 821
Cooling Air cooling	
Air cooling for HiPace 300/450 with TC 110/120	PM Z01 301
Air cooling for HiPace 300, 115 V	PM Z01 308
Air cooling for HiPace 300, 230 V	PM Z01 309
Cooling Water cooling	
Water cooling for HiPace 300 with push-in fitting 8 mm	PM 016 624 -T
Water cooling for HiPace 300 with 6 mm push-in fitting	PM 016 636 -T
Water cooling for HiPace 300 with tube fitting 1/4"	PM 016 637 -T
Water cooling for HiPace 300 with hose nozzle, 9.5 mm	PM 016 655 -T
Monitoring Pressure Sensors	
RPT 010, digital Piezo/Pirani sensor	PT R71 100
IKT 010, digital cold cathode sensor, low current	PT R72 100
IKT 011, digital cold cathode sensor, high current	PT R73 100
Mounting DN ISO-F, Mounting kits	
Mounting kit for DN 100 ISO-F, including coated centering ring, hexagon screws	PM 016 450 -T
Mounting kit for DN 100 ISO-F, including coated centering ring, splinter shield, hexagon screws	PM 016 451 -T
Mounting kit for DN 100 ISO-F, including coated centering ring, protective screen, hexagon screws	PM 016 452 -T
Mounting kit for DN 100 ISO-F, including coated centering ring, stud screws	PM 016 455 -T
Mounting kit for DN 100 ISO-F, including coated centering ring, splinter shield, stud screws	PM 016 456 -T
Mounting kit for DN 100 ISO-F, including coated centering ring, protection screen, stud screws	PM 016 457 -T
Mounting DN ISO-K/-F, sealings	
Centering ring with multifunction coating, DN 100 ISO-K/-F	PM 016 210 -U
Mounting Wall rail fittings	
Wall rail fitting for TPS 110/180/310/400	PM 061 392 -T
Other	
TIC 010, adapter for two sensors	PT R70 000
Protection DN ISO-K/-F, sealings, splinter shields, protection screens	
Centering ring with multifunction coating and integrated splinter shield, DN 100 ISO-K/-F	PM 016 807 -U
Centering ring with multifunction coating and integrated protection screen, DN 100 ISO-K/-F	PM 016 212 AU
Protection Sealing gas throttles	
Sealing gas throttle for HiPace 300	PM Z01 317

Accessories	
Valves Fore-vacuum safety valves	
TVV 001, fore-vacuum safety valve, 230 V AC	PM Z01 205
TVV 001, fore-vacuum safety valve, 115 V AC	PM Z01 206
Valves Sealing gas valves, shielded (normally closed)	
Sealing gas valve, shielded for HiPace 300 with TC 110/120	PM Z01 311
Venting Power failure venting units (normally open)	
Shielded power failure venting unit, 24 V DC, G 1/8", for connection to TC 110/120	PM Z01 330
Venting Venting accessories	
Flange with Pipe Thread, DN 16 ISO-KF, G 1/8"	PM 016 780 -T
Push-in fitting for 6 mm tube, G 1/8"	PM 016 781 -T
Push-in fitting for 8 mm tube, G 1/8"	PM 016 782 -T
Hose nozzle for 9 mm hose, G 1/8"	PM 016 783 -T
Banjo fitting	PM 016 787 -T
Screw-in flange, DN 10 ISO-KF, G 1/8"	PM 033 737 -T
Banjo fitting, small	PM 143 877 -T
TTV 001, Drier for Venting Turbopumps	PM Z00 121
Venting Venting valves (normally closed)	
Venting valve, shielded, 24 V DC, G 1/8", for connection to TC 110/120	PM Z01 290
Vibration Reduction Vibration dampers	
Vibration damper for HiPace 300/400, DN 100 ISO-K/F	PM 006 459 AX



伯东企业（上海）有限公司
HAKUTO ENTERPRISES (SHANGHAI) LTD.
TEL: (86) 21-5046 3511 TEL: (86) 21-5046 1322

上海伯东 -- 您理想的真空合作伙伴！

伯东公司成立于 1953 年，外企上市企业，全球范围内有一千七百名员工，集团年营业额约为 100亿人民币。

伯东公司在国内主要城市：上海，北京，苏州，广州，深圳，成都及厦门设有营业据点。

上海伯东真空产品事业部已累计为超过 10,000 家企业提供真空服务

我们致力于追求高品质的服务，为您提供一流的服务及一流产品：

品质保障：国际知名品牌指定授权代理商，所有产品及部件保证 100% 原厂原装进口

现货交期快：部分产品有现货，下单立即发货（现货数量有限，实际情况请联系销售工程师）

卓越维修能力：伯东工程师拥有10年以上维修经验，且受国外专业培训，拥有完全的拆解，维修，校正能力。

完美服务质量：原装进口检测设备全方位寻找问题症结及全方面的性能测试，确保完美的服务质量



伯东企业（上海）有限公司 销售及售后服务中心

上海浦东新区新金桥路1888号36号楼7楼702室

电 话：+86-21-5046-3511 / 139-1883-7267

传 真：+86-21-5046-1490

官 网：<http://www.hakuto-vacuum.cn>



伯东企业（上海）有限公司 深圳办事处 销售中心

深圳市罗湖区宝安南路1036号鼎丰大厦501

电 话：+86- 0755-2547-3988. 643

传 真：+86-21-5046-1490

伯东企业（上海）有限公司 北京办事处 销售中心

北京丰台区芳群园四区22号楼金城中心705室

电 话：+86- 010-8768-4988

传 真：+86-21-5046-1490