



CMR 363, 10 hPa F.S., pipe OD 1/2"



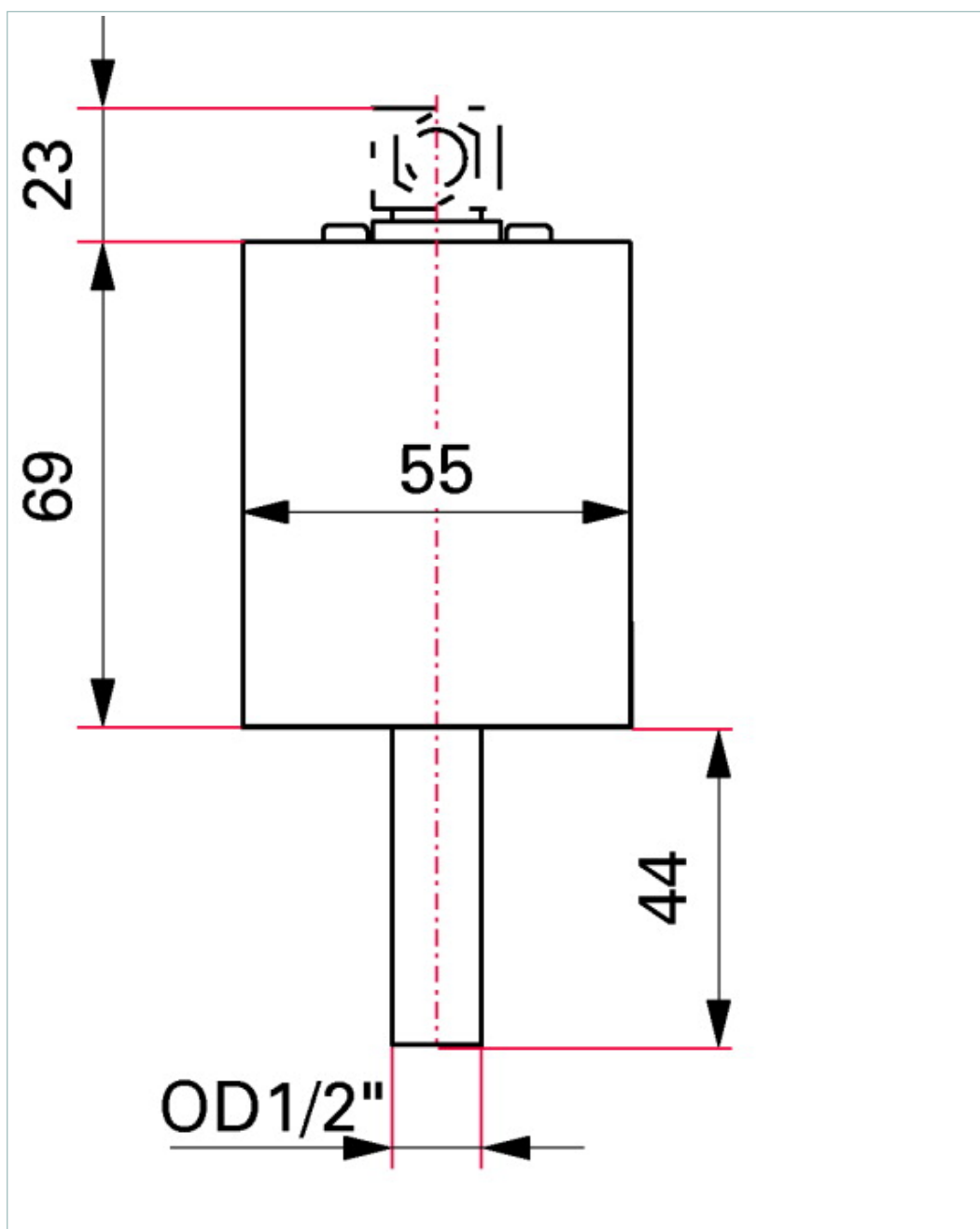


Similar Image

CMR 363, 10 hPa F.S., pipe OD 1/2"

- Precise pressure measurement independent of type of gas
- Measurement range up to four decades
- Gauge for connection to TPG
- Measurement range from $1 \cdot 10^{-3}$ hPa to 11 hPa
- Minimal zero drift
- Sensor in ceramic technology
- No memory effects
- Materials employed have identical temperature coefficients
- Precise temperature compensation
- Calibration test report included in delivery

Dimensions



Technical Data	CMR 363, 10 hPa F.S., pipe OD ½"
Accuracy	0.20 % of reading
Bakeout temperature max. at the flange	≤ 110 °C ≤ 230 °F ≤ 383 K
Full Scale	10 hPa 7.5 Torr 10 mbar
Measurement range max.	11 hPa 8.25 Torr 11 mbar
Measurement range min.	1 · 10 ⁻³ hPa 7.5 · 10 ⁻⁴ Torr 1 · 10 ⁻³ mbar
Membrane and measuring chamber	Ceramics (Al ₂ O ₃ 99.5 %)
Method of measurement	Capacitance
Nominal diameter	Pipe OD ½"
Output signal: Minimum load	10 kΩ
Output signal: Pressure range	1 - 9.8 V
Output signal: Sensor error above	> 9.8 V
Output signal: Sensor error below	< 0.4 V
Pipe and flange	Stainless steel
Pressure max.	2,000 hPa 1,500 Torr 2,000 mbar
Protection category	IP30
Resolution	0.003 % F.S.
Response time	30 ms
Sensor cable length	≤ 120 m
Supply: Power consumption max.	≤ 1 W
Supply: Voltage	14-30 V DC
Temperature: Operating	5-50 °C 41-122 °F 278-323 K
Temperature: Storage	-40-65 °C -40-149 °F 233-338 K
Temperature effect: on span	0.01 % of reading/°C
Temperature effect: on zero	0.005 % F.S./°C
Volume	≤ 3.6 cm ³
Weight	≤ 310 g

Order number	
CMR 363	PT R24 620

Accessories	
Accessory for ActiveLine gauges and controllers	
Mating connector	B 4707 283 MA
Sensor cable, 3 m	PT 448 250 -T