



**CMR 365, 0.1 hPa F.S., pipe OD 1/2"**



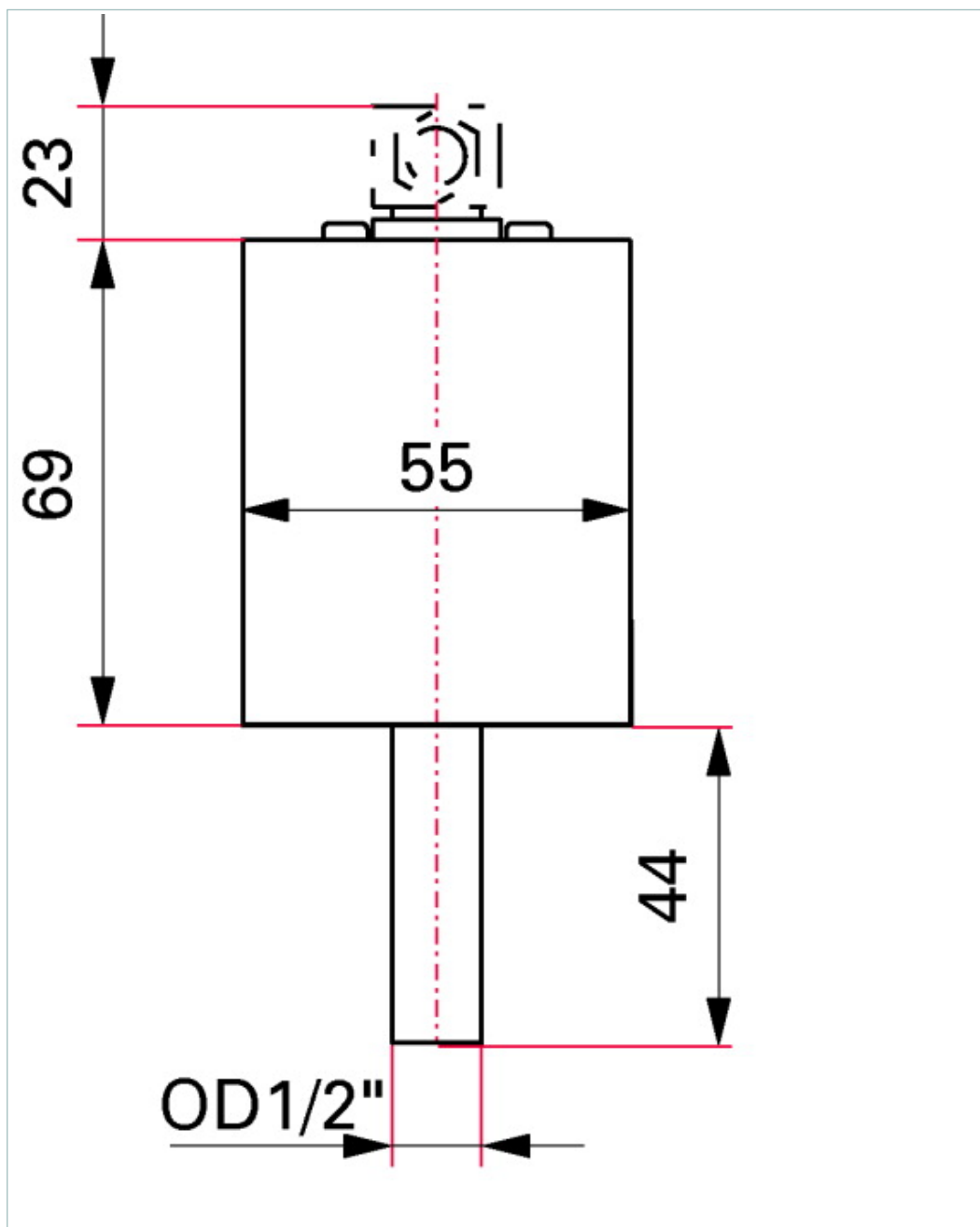


Similar Image

### CMR 365, 0.1 hPa F.S., pipe OD 1/2"

- Precise pressure measurement independent of type of gas
- Measurement range up to four decades
- Gauge for connection to TPG
- Measurement range from  $1 \cdot 10^{-5}$  hPa to 0.11 hPa
- Minimal zero drift
- Sensor in ceramic technology
- No memory effects
- Materials employed have identical temperature coefficients
- Precise temperature compensation
- Calibration test report included in delivery

#### Dimensions



Technical Data	CMR 365, 0.1 hPa F.S., pipe OD ½"
Accuracy	0.50 % of reading
Bakeout temperature max. at the flange	≤ 110 °C   ≤ 230 °F   ≤ 383 K
Full Scale	0.1 hPa   0.07 Torr   0.1 mbar
Measurement range max.	0.11 hPa   0.08 Torr   0.11 mbar
Measurement range min.	1 · 10 <sup>-5</sup> hPa   7.5 · 10 <sup>-6</sup> Torr   1 · 10 <sup>-5</sup> mbar
Membrane and measuring chamber	Ceramics (Al <sub>2</sub> O <sub>3</sub> 99.5 %)
Method of measurement	Capacitance
Nominal diameter	Pipe OD ½"
Output signal: Minimum load	10 kΩ
Output signal: Pressure range	1 - 9.8 V
Output signal: Sensor error above	> 9.8 V
Output signal: Sensor error below	< 0.4 V
Pipe and flange	Stainless steel
Pressure max.	1,300 hPa   975 Torr   1,300 mbar
Protection category	IP30
Resolution	0.003 % F.S.
Response time	130 ms
Sensor cable length	≤ 120 m
Supply: Power consumption max.	≤ 1 W
Supply: Voltage	14-30 V DC
Temperature: Operating	5-50 °C   41-122 °F   278-323 K
Temperature: Storage	-40-65 °C   -40-149 °F   233-338 K
Temperature effect: on span	0.03 % of reading/°C
Temperature effect: on zero	0.02 % F.S./°C
Volume	≤ 3.6 cm <sup>3</sup>
Weight	≤ 310 g

Order number
CMR 365 PT R24 640

Accessories	
Accessory for ActiveLine gauges and controllers	
Mating connector	B 4707 283 MA
Sensor cable, 3 m	PT 448 250 -T