



Okta 8000

Roots pump with a pumping speed of 3350 to 12550 m³/h:



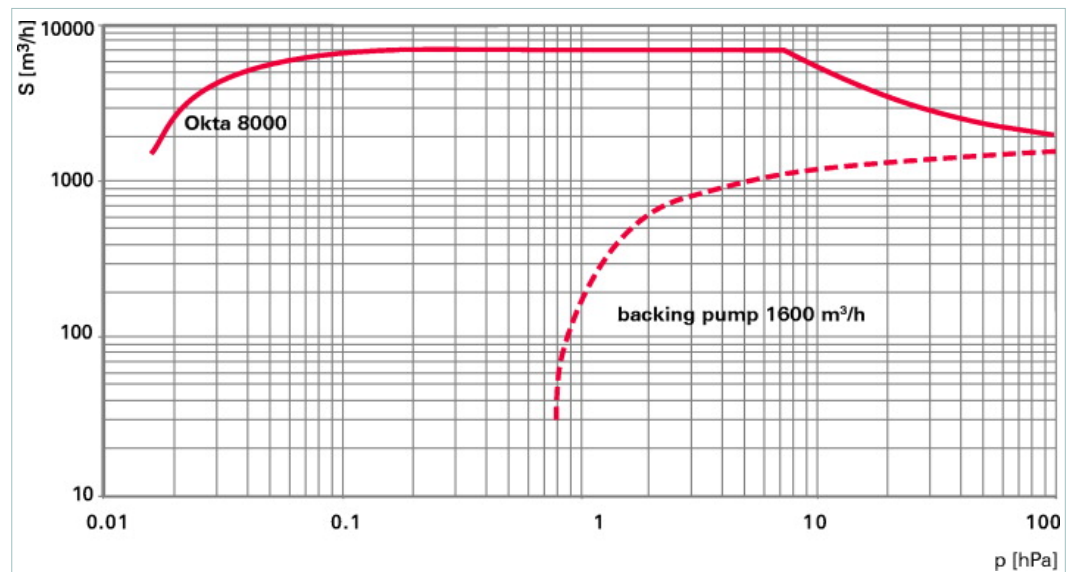


Similar Image

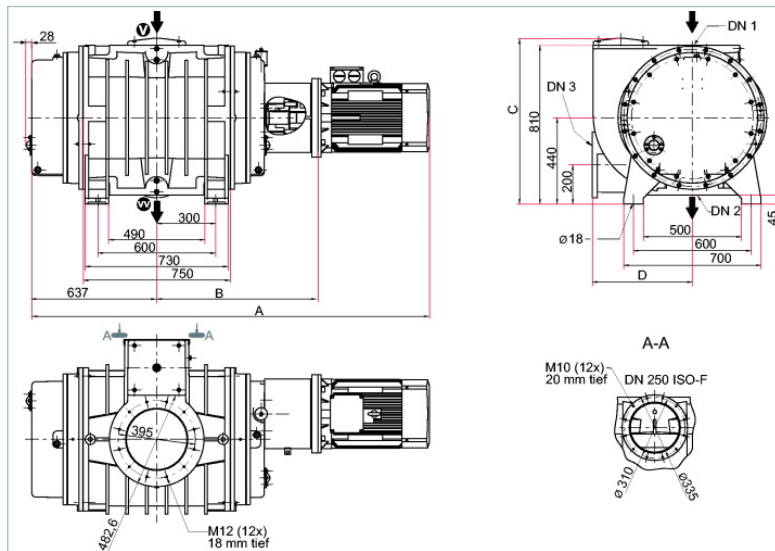
Okta 8000, Roots pump without motor

- High-performance Roots pump with a pumping speed of 3350 to 12550 m³/h
- Without motor (coupling and motor lantern are included in delivery)
- No thermal overload thanks to integral overflow valve
- For applications in the low and medium vacuum

Okta = Standard pumps with radial shaft sealing rings, housing parts made of gray cast iron or nodular graphite cast iron, flange connection in accordance with ISO-F



Dimensions



B	791 mm
C	845 mm
D	510 mm
DN 1	DN 320 ISO-F
DN 2	DN 320 ISO-F
DN 3	DN 250 ISO-F

Technical Data

Okta 8000, Roots pump without motor

Ambient temperature	5-40 °C 41-104 °F 278-313 K
Cooling method, standard	Air
Differential pressure at the overflow valve	23 hPa 17.25 Torr 23 mbar
Emission sound pressure level (EN ISO 2151) at intake pressure 10 hPa	78 dB (A)

Technical Data	Okta 8000, Roots pump without motor
Emission sound pressure level (EN ISO 2151) at intake pressure 1 hPa	74 dB (A)
Flange (in)	DN 320 ISO-F
Flange (out)	DN 320 ISO-F
Leak rate	$1 \cdot 10^{-3}$ Pa m ³ /s $7.5 \cdot 10^{-3}$ Torr l/s $1 \cdot 10^{-2}$ mbar l/s
Nominal pumping speed	3350-12550 m ³ /h
Nominal pumping speed at 50 Hz	8370 m ³ /h
Nominal pumping speed at 60 Hz	10040 m ³ /h
Nominal rotation speed at 50 Hz	1500 min ⁻¹
Nominal rotation speed at 60 Hz	1800 min ⁻¹
Operating fluid	P3
Operating fluid filling	21 l
Protection category	IP 55
Rotation speed	from 1200 to 2250 min ⁻¹
Rotation speed max.	2250 min ⁻¹
Rotation speed min.	1200 min ⁻¹
Version	Standard without motor
Weight: without motor	1,480 kg 3,262.81 lb

Order number
Okta 8000 PP W80 001

Accessories	
Adjusting elements for fastening the feet.	
Setting elements for foot mounting for Okta 8000 / Okta 8000 G, 35 mm + 10 mm ***	PP 047 451 -T
Blank flange sets	
Blank flange set (Stainless steel) for Okta 8000, DN ISO-K	PP 047 450 -T
Blank flange set for Okta 8000, Cast iron	PP 047 449 -T
DN ISO-F	
Mounting bolts (Stainless steel) for Okta 8000, DN ISO-F	PP 047 439 -T
Mounting bolts (Zinc-plated Steel) for Okta 8000, DN ISO-F	PP 047 438 -T
DN ISO-K	
Claw set (Stainless steel) for Okta 8000, DN ISO-K	PP 047 446 -T
Claw set (Zinc-plated Steel) * for Okta 8000, DN ISO-K	PP 047 448 -T
Claw set (Zinc-plated Steel) for Okta 8000, DN ISO-K	PP 047 447 -T
Finned tube cooler	
Finned tube cooler for Okta 8000 / Okta 4000 G / Okta 8000 G, G 3/8 (2x)	PP 047 289 -T
Frequency converter	
Frequency converter (Complete with control box) Okta 8000	PP 078 312 -T
Purge gas kit	
Sealing gas kit for Okta 250 / M / Okta 500 / M / Okta 1000 / M / Okta 2000 / M / Okta 4000 / M / Okta 6000 / M / Okta 8000 / Okta 1500 G / Okta 4000 G / Okta 8000 G, G 3/8 (4x)	PP 027 401 -T
Sealing kits	
Centering ring with outer ring for vacuum flange for Okta 8000, DN ISO-F	PF 303 132 -T
Splinter shield	
Splinter shield for Okta 8000/Okta 8000 G	PP 030 152 -X
Splinter shield for Okta 8000 G	PP 070 315 -U
Sprayer	
Sprayer DN ISO-F for Okta 8000	PP 047 435 -T
Temperature sensor	
Temperature sensor for Okta 18000, G 3/8	PP 048 156 -T
Temperature sensor for Okta 8000 / Okta 8000 G, G ½	PP 047 452 -T
Consumables	
P3, mineral oil, 1 l	PK 001 106 -T
P3, mineral oil, 20 l	PK 001 108 -T