



Okta 1500 G

Gas-cooled Roots pump with a pumping speed range from 750 to 3,600 m³/h





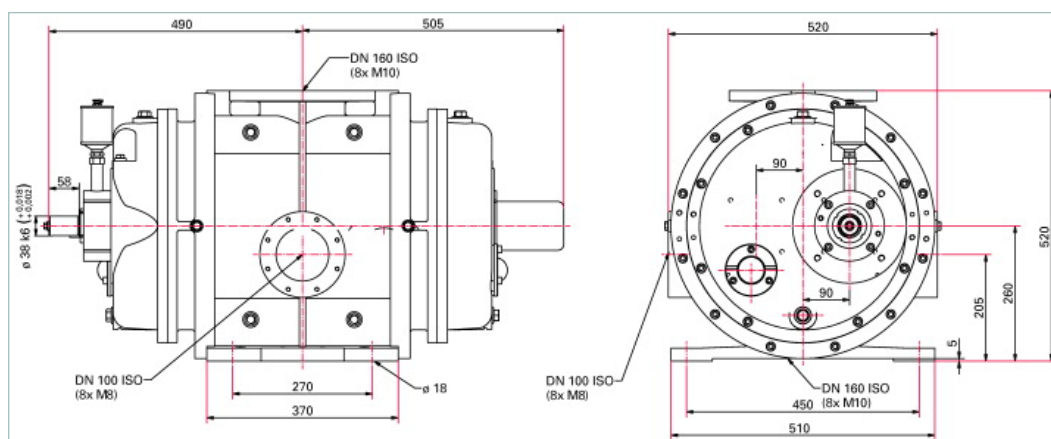
Similar Image

Okta 1500 G, gas-cooled Roots pump without motor, DN 160 ISO-F

- High-performance gas cooled roots pump with a pumping speed from 750 to 3600 m³/h
- For applications in the low and medium vacuum
- Single stage pressure range from 130 to 1013 hPa, in series with smaller final pressure
- Connection flange DN 160 ISO-F
- No thermal overload thanks to gas cooling
- With sealing gas connection
- Customized design and offer for motor, gas cooler, and coupling on request



Dimensions



Technical Data

Okta 1500 G, gas-cooled Roots pump without motor, DN 160 ISO-F

| | |
|--------------------------|---------------------------------|
| Ambient temperature | 5-40 °C 41-104 °F 278-313 K |
| Cooling gas connection | DN 100 ISO-F |
| Cooling method, standard | Gas-cooled |
| Flange (in) | DN 160 ISO-F |
| Flange (out) | DN 160 ISO-F |

| Technical Data | Okta 1500 G, gas-cooled Roots pump without motor, DN 160 ISO-F |
|---|--|
| Leak rate | 1 · 10 ⁻³ Pa m ³ /s 7.5 · 10 ⁻³ Torr l/s 1 · 10 ⁻² mbar l/s |
| Noise level with connected exhaust line | 75-105 dB (A) |
| Nominal pumping speed | 750-3600 m ³ /h |
| Nominal pumping speed at 50 Hz | 1500 m ³ /h |
| Nominal pumping speed at 60 Hz | 1800 m ³ /h |
| Nominal rotation speed at 50 Hz | 1500 min ⁻¹ |
| Nominal rotation speed at 60 Hz | 1800 min ⁻¹ |
| Operating fluid | P3 |
| Operating fluid filling | 7 l |
| Protection category | IP 55 |
| Rotation speed | from 750 to 3600 min ⁻¹ |
| Rotation speed max. | 3600 min ⁻¹ |
| Rotation speed min. | 750 min ⁻¹ |
| Sealing gas | yes |
| Ultimate pressure without gas ballast | 130 hPa 97.5 Torr 130 mbar |
| Weight: without motor | 460 kg 1,014.12 lb |

| Order number | |
|--------------|------------|
| Okta 1500 G | PP G50 001 |

| Accessories | |
|---|---------------|
| Adjusting elements for fastening the feet. | |
| Setting elements for foot mounting for Okta 2000 / M / Okta 4000 / M / Okta 6000 / M / Okta 1500 G, 29 mm | PP 144 118 -T |
| Blank flange sets | |
| Blank flange set (Stainless steel) for Okta 1500 G, DN PN16/PN10 | PP 014 540 -T |
| DN PN16/PN10 | |
| Mounting bolts (Zinc-plated Steel) for Okta 1500 G, DN PN16/PN10 | PP 014 539 -T |
| Purge gas kit | |
| Sealing gas kit for Okta 250 / M / Okta 500 / M / Okta 1000 / M / Okta 2000 / M / Okta 4000 / M / Okta 6000 / M / Okta 8000 / Okta 1500 G / Okta 4000 G / Okta 8000 G, G 3/8 (4x) | PP 027 401 -T |
| Sealing kits | |
| Centering ring with outer ring for vacuum flange for Okta 1000 / M / Okta 2000 / M, DN ISO-F | PF 303 116 -T |
| Seal kit (FKM) for Okta 1500 G, DN PN16/PN10 | PP 014 541 -T |
| Splinter shield | |
| Splinter shield for Okta 1000/1000 M/1500 G/2000/2000 M | PP 031 114 -X |
| Splinter shield for Okta 1000/2000 AD-Series | PP 031 115 -X |
| Sprayer | |
| Sprayer DN ISO-F for Okta 1000 / M / Okta 2000 / M | PP 031 252 -T |
| Sprayer DN PN16/PN10 for Okta 1000 / M / Okta 2000 / M / Okta 1500 G | PP 031 243 -T |
| Temperature sensor | |
| Temperature sensor for Okta 250 / M / Okta 500 / M / Okta 1000 / M / Okta 2000 / M / Okta 4000 / M / Okta 6000 / M / Okta 500 G / Okta 1500 G / Okta 4000 G, G 3/8 | PP 041 457 -T |
| Consumables | |
| P3, mineral oil, 5 l | PK 001 107 -T |