



**CCR 361, 1000 Torr F.S.,  
pipe OD 1½"**



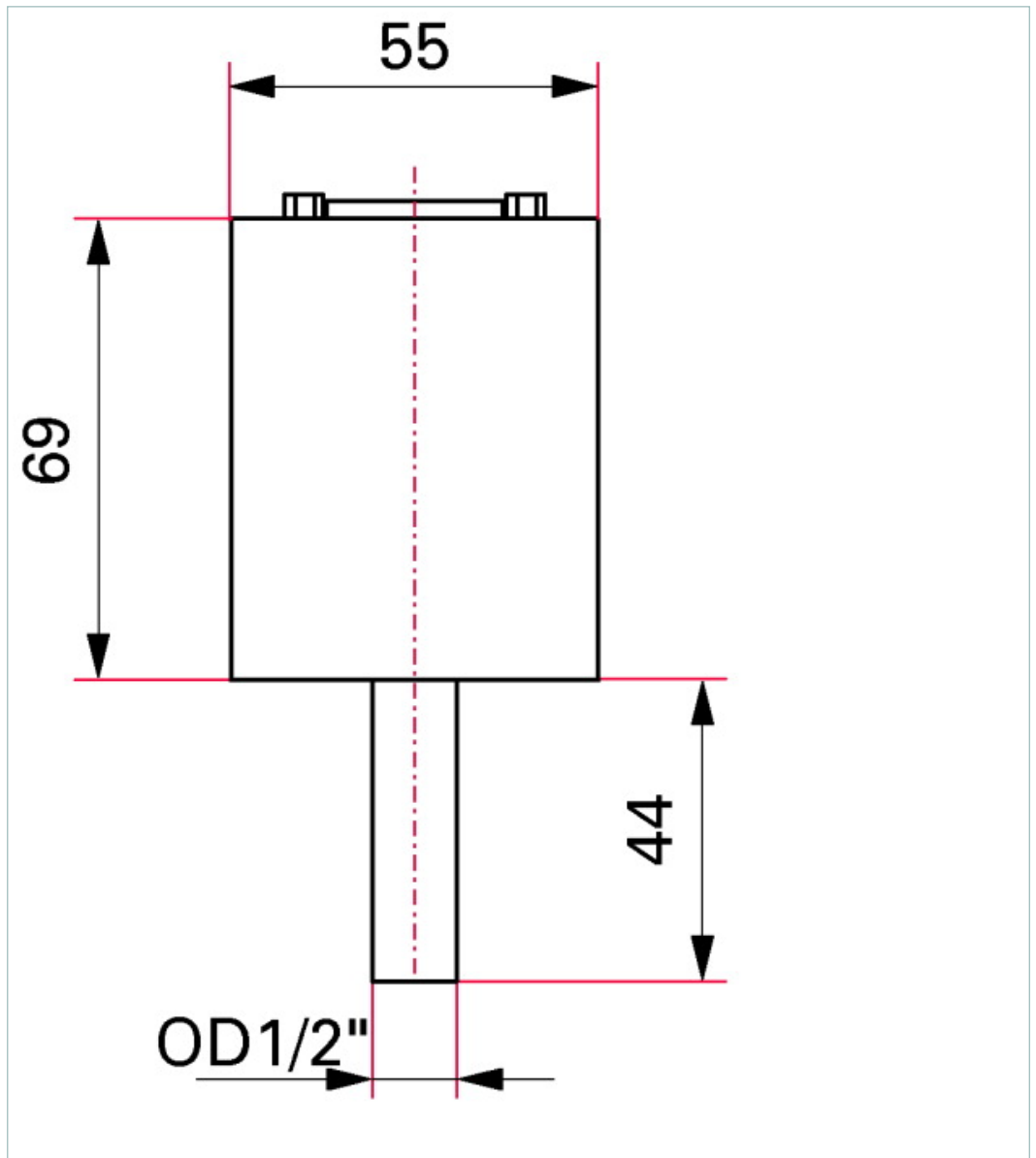


Similar Image

### CCR 361, 1000 Torr F.S., pipe OD 1/2"

- Precise pressure measurement independent of type of gas
- Measurement range up to four decades
- Connector plug D-sub 15-pole, output signal and plug-and-socket connector compatible with MKS Baratron®
- Measurement range  $1.33 \cdot 10^{-1}$  hPa bis 1333 hPa ( $1 \cdot 10^{-1}$  Torr to 1000 Torr)
- Accuracy: 0.2 % of measurement
- Supply voltage: 14 – 30 V
- Output signal: 0 – 10 V
- Ceramic technology sensor
- No memory effects
- Precise temperature compensation
- Minimal zero drift
- Output signal an connector compatible with MKS Baratron
- Calibration test report included in delivery

#### Dimensions



Technical Data	CCR 361, 1000 Torr F.S., pipe OD ½"
Accuracy	0.20 % of reading
Bakeout temperature max. at the flange	≤ 110 °C   ≤ 230 °F   ≤ 383 K
Full Scale	1000 Torr
Measurement range max.	1,333 hPa   999.75 Torr   1,333 mbar
Measurement range min.	1.33 · 10 <sup>-1</sup> hPa   9.98 · 10 <sup>-2</sup> Torr   1.33 · 10 <sup>-1</sup> mbar
Membrane and measuring chamber	Ceramics (Al <sub>2</sub> O <sub>3</sub> 99.5 %)
Method of measurement	Capacitance
Nominal diameter	Pipe OD ½"
Output signal: Minimum load	> 10 kΩ
Output signal: Pressure range	0-10 V
Pipe and flange	Stainless steel
Pressure max.	3,000 hPa   2,250 Torr   3,000 mbar
Protection category	IP30
Resolution	0.003 % F.S.
Response time	30 ms
Sensor cable length	≤ 100 m (0.14 mm <sup>2</sup> conductor)
Supply: Power consumption max.	≤ 1 W
Supply: Voltage	14-30 V DC
Temperature: Operating	5-50 °C   41-122 °F   278-323 K
Temperature: Storage	-40-65 °C   -40-149 °F   233-338 K
Temperature effect: on span	0.01 % of reading/°C
Temperature effect: on zero	0.0050 % F.S./°C
Volume	≤ 3.6 cm <sup>3</sup>
Weight	≤ 370 g

Order number
CCR 361
PT R27 600