



Data sheet · ATH 1603 M

ATH 1603 M, DN 200 ISO-F, External drive electronics, Water cooled, Non-heated

5-axis magnetically levitated turbopump with drag stage for a pump speed of up to 1360 l/s for N₂

ATH 1603 M, DN 200 ISO-F, External drive electronics, Water cooled, Non-heated

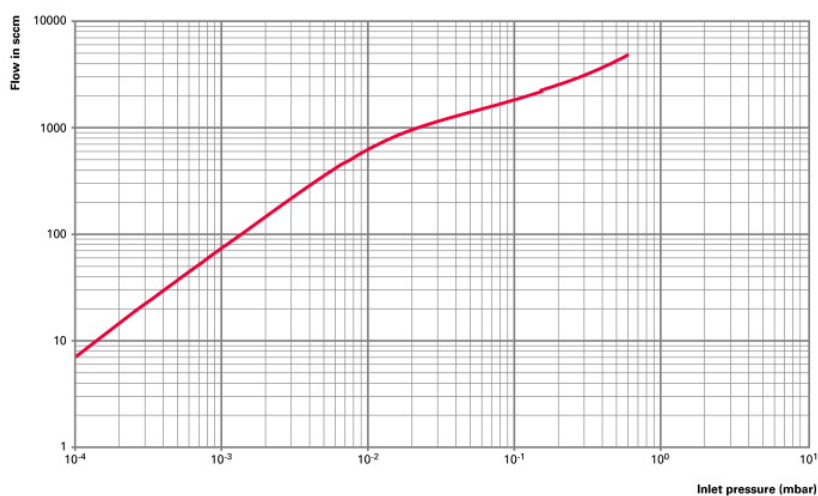
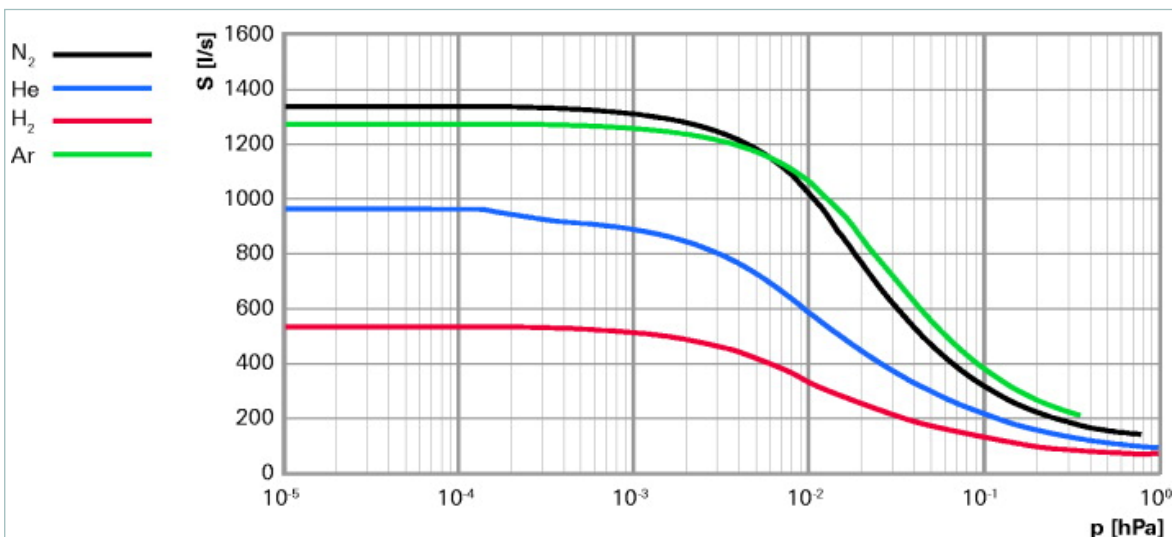
ATH 1603 M

Similar Image



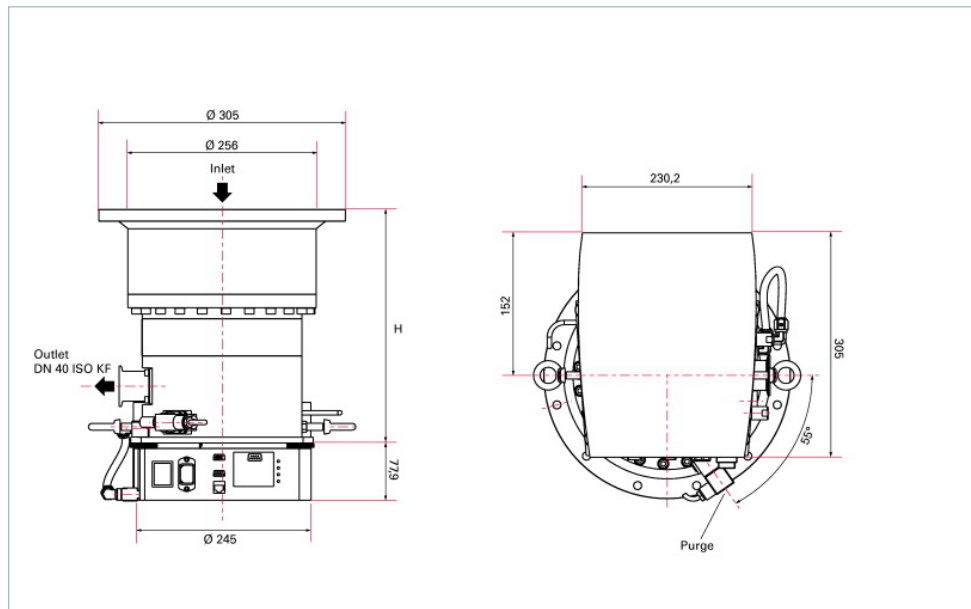
- 5-axis magnetically levitated turbopump with drag stage for a pump speed of up to 1360 l/s for N₂
- DN 200 ISO-F inlet flange
- Operation with Magpower external drive electronics
- Installation in any orientation
- Water cooled, non-heated
- CE marked and ROHS compliant

Characteristics



ATH 1603 M, DN 200 ISO-F, External drive electronics, Water cooled, Non-heated

Dimensions



H 320.2 mm

ATH 1603 M, DN 200 ISO-F, External drive electronics, Water cooled, Non-heated

Technical Data

**ATH 1603 M,
DN 200 ISO-F,
External drive
electronics,
Water cooled,
Non-heated**

Bearing	Magnetically Levitated
Compression ratio for Ar	$> 1 \cdot 10^8$
Compression ratio for H ₂	$> 5 \cdot 10^2$
Compression ratio for He	$> 4 \cdot 10^4$
Compression ratio for N ₂	$> 1 \cdot 10^8$
Cooling method	Water
Cooling water consumption	1.0 l/min
Cooling water temperature	15-25 °C
Cooling water temperature max.	40 °C
Electronic drive unit	External drive electronics
Flange (in)	DN 200 ISO-F
Flange (out)	DN 40 ISO-KF
Fore-vacuum max. for N ₂	1.7 hPa
Gas throughput for Ar	20.3 hPa l/s
Gas throughput for H ₂	> 67.6 hPa l/s
Gas throughput for He	> 67.6 hPa l/s
Gas throughput for N ₂	67.6 hPa l/s
Interfaces	Via External drive electronics
Mounting orientation	in any orientation
Operating voltage	200-240 V AC, 50/60 Hz
Power consumption at ultimate pressure	300 W
Pumping speed for Ar	1280 l/s
Pumping speed for H ₂	540 l/s
Pumping speed for He	940 l/s
Pumping speed for N ₂	1360 l/s
Rotation speed ± 2 %	39000 min ⁻¹
Run-up time	< 6 min
Separate electronic drive unit	yes
Sound pressure level	≤ 48 dB (A)
Ultimate pressure	$< 6 \cdot 10^{-9}$ hPa
Weight	34 (pump) + 8 (controller) kg

Order number

Y2562100

ATH 1603 M, DN 200 ISO-F, External drive electronics, Water cooled, Non-heated

Electronic controllers

Magpower controller	120917
---------------------	--------

Inlet screen

Aluminum inlet screen kit for DN200	109200
Stainless inlet screen kit for DN200 - M 4.5	108872

Interconnecting cable (pump to Magpower external drive electronics)

Interconnecting cable (pump to Magpower external drive electronics), L = 1.0 m	A215300-010-C6-D
Interconnecting cable (pump to Magpower external drive electronics), L = 10.0 m	A215300-100-C6-D
Interconnecting cable (pump to Magpower external drive electronics), L = 20.0 m	A215300-200-C6-D
Interconnecting cable (pump to Magpower external drive electronics), L = 3.5 m	A215300-035-C6-D
Interconnecting cable (pump to Magpower external drive electronics), L = 5.0 m	A215300-050-C6-D

Mounting kits

Mounting bolts for ISO-F (for ATH 1600 M, DN 200/250) with centering ring	110675
Mounting bolts for ISO-F (for ATH 500 M, DN160; ATH 1600 M, DN 200/250; ATH 2300 M, DN 250; ATH 2800 M, DN 250) without centering ring	110676S

Power cord

Power cord 2.5 m Europe standard 200 - 240 V AC	A328405
Power cord 2.5 m US standard 200 - 240 V AC	A331729

Valve cable (external drive electronics to venting valve)

Valve cable (Magpower external drive electronics to venting valve), L = 1.0 m	A462403-010
Valve cable (Magpower external drive electronics to venting valve), L = 10.0 m	A462403-100
Valve cable (Magpower external drive electronics to venting valve), L = 20.0 m	A462403-200
Valve cable (Magpower external drive electronics to venting valve), L = 3.5 m	A462403-035
Valve cable (Magpower external drive electronics to venting valve), L = 5.0 m	A462403-050

Venting valves and other accessories

Air venting valve (for OBC V4 and Magpower)	114280
Dust filter	106229
Purge valve 25 sccm	118900
Purge valve 50 sccm	111921
Water inlet valve 24 V DC	108668

**Vacuum solutions
from a single source**

Pfeiffer Vacuum stands for innovative and custom vacuum solutions worldwide, technological perfection, competent advice and reliable service.

**Complete range
of products**

From a single component to complex systems:
We are the only supplier of vacuum technology
that provides a complete product portfolio.

**Competence in
theory and practice**

Benefit from our know-how and our portfolio of training opportunities! We support you with your plant layout and provide first-class on-site service worldwide.

**Are you looking for a
perfect vacuum solution?
Please contact us:**

Pfeiffer Vacuum GmbH
Headquarters · Germany
T +49 6441 802-0
info@pfeiffer-vacuum.de
www.pfeiffer-vacuum.com