



# MiniTest 300

Helium leak detector with quartz window sensor





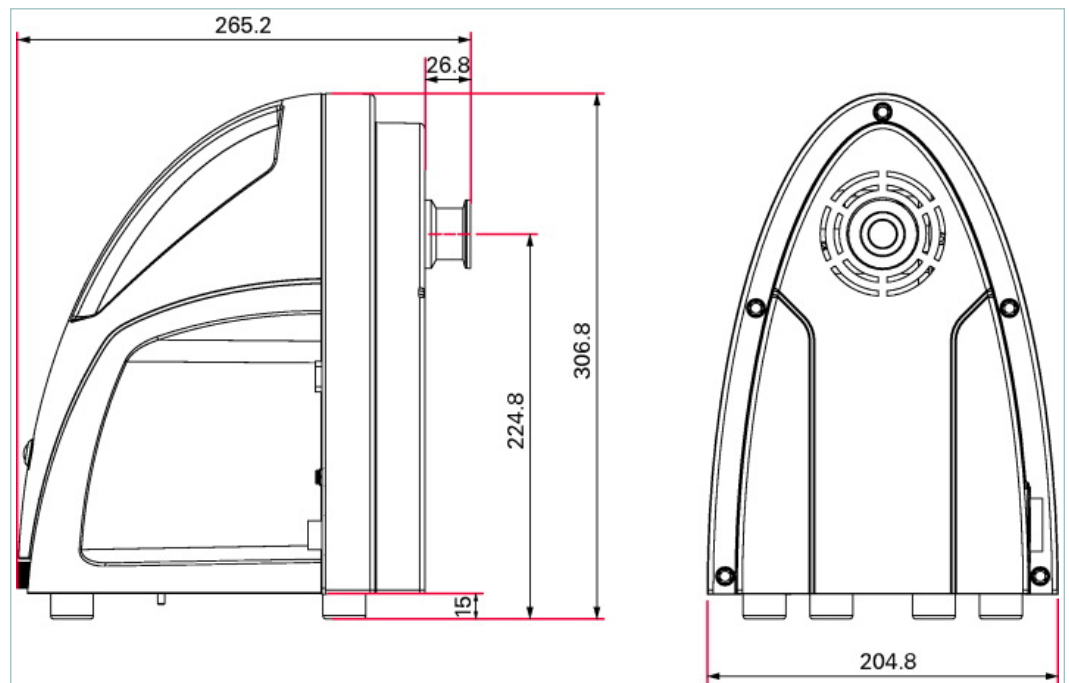
Similar Image

## MiniTest 300, 100-240 V, 50/60 Hz

- Compact design and low weight, approx. 5 kg
- Detection limit of  $5 \cdot 10^{-8}$  Pa m<sup>3</sup>/s (S = 1 l/s)
- Good water vapor tolerance
- Inlet pressure up to 200 hPa abs.
- Remote control, wireless or with cable, with data logging and USB port
- Connection of an external Compact gauge
- Low maintenance costs

The optional remote control RC 500 or RC 500 WL required for operation is not included in the scope of delivery!

### Dimensions



Technical Data	MiniTest 300, 100-240 V, 50/60 Hz
Backing pump	without backing pump
Cold start to ready	30 min
Current consumption	max. 2 A
Flange (in)	DN 25 KF
Inlet pressure max.	200 hPa   150 Torr   200 mbar
Interface	RS-485, RJ-25, Gauge, I/O D-Sub 9, Remote control D-Sub 9
Power consumption	max. 30 VA
Smallest detectable leak rate for <sup>4</sup> He (according AVS 2.1)	$1 \cdot 10^{-7}$ Pa m <sup>3</sup> /s   $7.5 \cdot 10^{-7}$ Torr l/s   $1 \cdot 10^{-6}$ mbar l/s
Sound pressure level	< 70 dB (A)
Supply	100–240 V, 50/60 Hz
Temperature: Operating	10–35 °C   50–95 °F   283–308 K
Temperature: Storage	–10–55 °C   14–131 °F   263–328 K
Test method	Vacuum leak detection
Type	Mobile
User interface	Operated by remote control RC 500 WL

Technical Data		MiniTest 300, 100-240 V, 50/60 Hz	
Weight		5 kg   11.02 lb	
Order number			
MiniTest 300		PT L03 000	
Accessories			
Accessories CenterLine gauges and controllers			
Centering ring with poral filter, FPM/stainless steel, DN 25 ISO-KF		PF 117 225 -T	