



MobileTemp HD is shown configured with a TP04300A ThermoStream® temperature source and Model HD1012 ThermoChamber.

## Hood Style ThermoChamber™

The **Hood Style ThermoChamber** is a Compact Thermal Test Enclosure for components, PCBs and assemblies at the tester, in-line or on the benchtop.

### Key Benefits

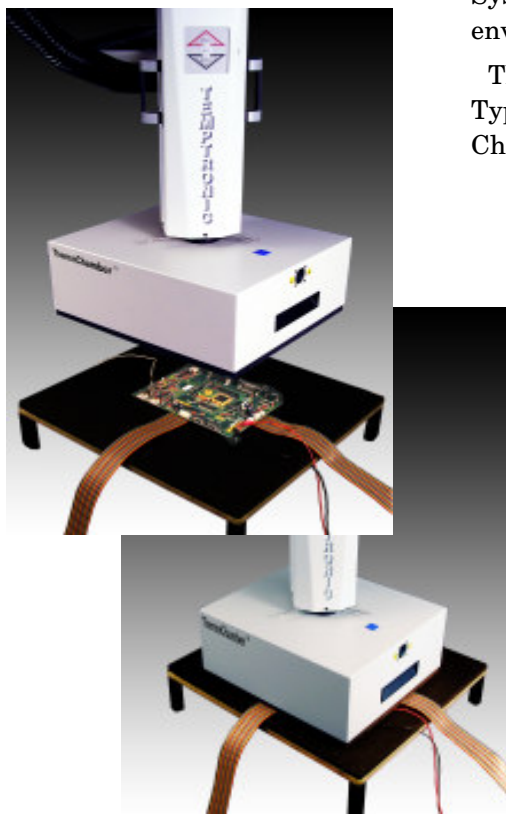
- ◆ No LN<sub>2</sub> or CO<sub>2</sub> required.
- ◆ **Frost-free** low temperature testing
- ◆ Uniform, accurate, controlled thermal environment.

**Bring Temperature to your Test with MobileTemp™!** For quick, convenient thermal testing and cycling at the test site, the **Hood Style ThermoChamber**, combined with the precise temperature control, user-friendly features and portability of the ThermoStream® System provides the most efficient and mobile thermal test environment.

The **Hood Style ThermoChamber™** is designed for use with the Type "A" TP04300 Series ThermoStream® System. Other ThermoChamber styles are available.

## Features and Advantages

- ◆ -65° to +200°C Temperature Range
- ◆ Fastest available temperature transition rates with no LN<sub>2</sub> or CO<sub>2</sub>:
  - Heating time: Ambient to +125°C: 60 seconds
  - Cooling time: Ambient to -55°C: 150 seconds
- ◆ Proprietary Hood design ensures uniform distribution of thermal air.
- ◆ Installs with ease on the Type "A" ThermoStream; no tools are required.
- ◆ Unique design allows test cables to be routed around the entire periphery of the Hood.



**Hood-style ThermoChamber**, attached to the TP043xxA, is lowered over the test subject (UUT), enclosing it and creating a moisture-free thermal test environment. Hood is shown with Optional Base.



[www.hakuto-vacuum.cn](http://www.hakuto-vacuum.cn)  
[www.hakuto-vacuum.com.tw](http://www.hakuto-vacuum.com.tw)

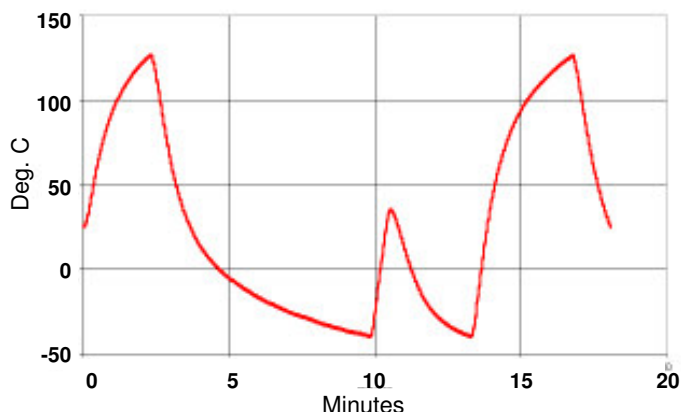
# MobileTemp™ Series

Temperature on the Move

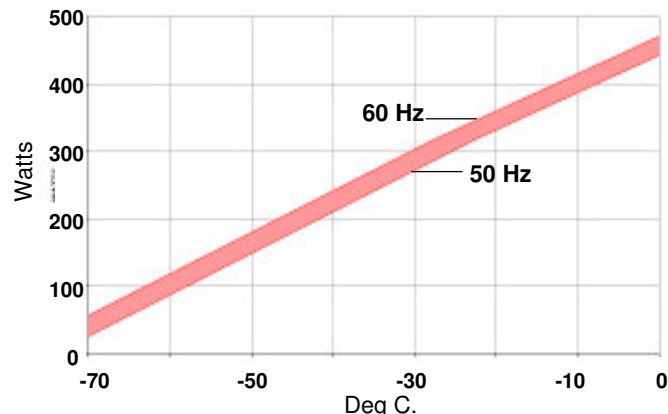
## Hood Style ThermoChamber™

### Typical Performance<sup>1,2,3</sup>

Transitions



Thermal Capacity



#### Temperature Change Rate (in minutes)

Ambient to +125°C	2.4
+125°C to Ambient	1.8
Ambient to -40°C	2.6
-40°C to Ambient	0.6

#### Chamber Uniformity 2.0°C range from setpoint

<sup>1</sup> Refer to Temptronic Product Specification Doc. SL10580

<sup>2</sup> For optimal performance, use ThermoChamber closest in size to the UUT.

<sup>3</sup> Performance is measured on HD1416 using a model TP04300A-8C32 thermal source at 12 scfm air flow rate

### Features

Hood Model No.	HD1012	HD1416
Thermocouple Connections	1	1

### Weights and Dimensions (nominal)

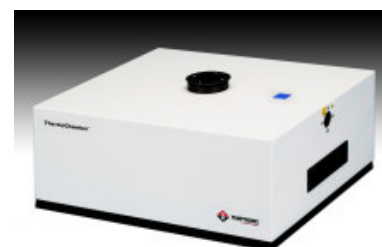
Hood Model No.	HD1012	HD1416
Inside Dimension (ID) cm. (in.) nominal	25.4 W x 30.5 L x 10.2 H cm (10 W x 12 L x 4 H in.)	35.5 W x 40.6 L x 10.2 H cm (14 W x 16 L x 4 H in.)
Outside Dimension (OD) cm. (in.)	35.5 W x 40.6 L x 16.5 H cm (14 W x 16 L x 6.5 H in.)	45.8 W x 51 L x 16.5 H cm (18 W x 20 L x 6.5 H in.)
Weight - kg (lbs.)	3.2 kg (8 lbs.)	4.5 kg (11 lbs.)

#### Base (Optional)

Dimensions:	50.8 L x 56 W x 12.4 H cm (20 x 22 x 4.9 in.)
-------------	---

### OPTIONS

- ◆ The **Base** is a non-conductive platform for support of the user's UUT. The platform can be modified by the user to allow connection between UUT and tester. Base includes thermocouple interface connectors.
- ◆ The **Insulation Kit** includes rubber sheets to provide greater thermal insulation when coupling to a UUT. Available in non-conductive and conductive material.



Hood Style ThermoChamber's top connector port enables insertion of the TP043xxA ThermoStream airflow nozzle.

These specifications are valid when used with a TP04300 Series ThermoStream for the standard product and are subject to change without notice. Applications requiring modification of the mechanical, thermal or electrical characteristics should be discussed with Temptronic for possible accommodation at additional cost. ©Copyright, Temptronic 2006, 2007. ThermoStream® is a registered trademark of Temptronic Corporation, an inTEST Company.



ISO:9001-2000  
Certified



**TEMPTRONIC**  
an inTEST Company

Tel: 021-5046-3511  
FAX: 021-5046-1490  
www.hakuto-vacuum.cn  
ec@hakuto-vacuum.cn

THE WORLDWIDE LEADER IN LOCALIZED TEMPERATURE CONTROL SOLUTIONS

MobileTemp HD / June 2007 / Doc. Part no. SL10500 R/B